

# Hydrogeomorphology

At Red Canyon Creek In Lander, Wyoming

James Mastroianni

JDM359@Cornell.edu

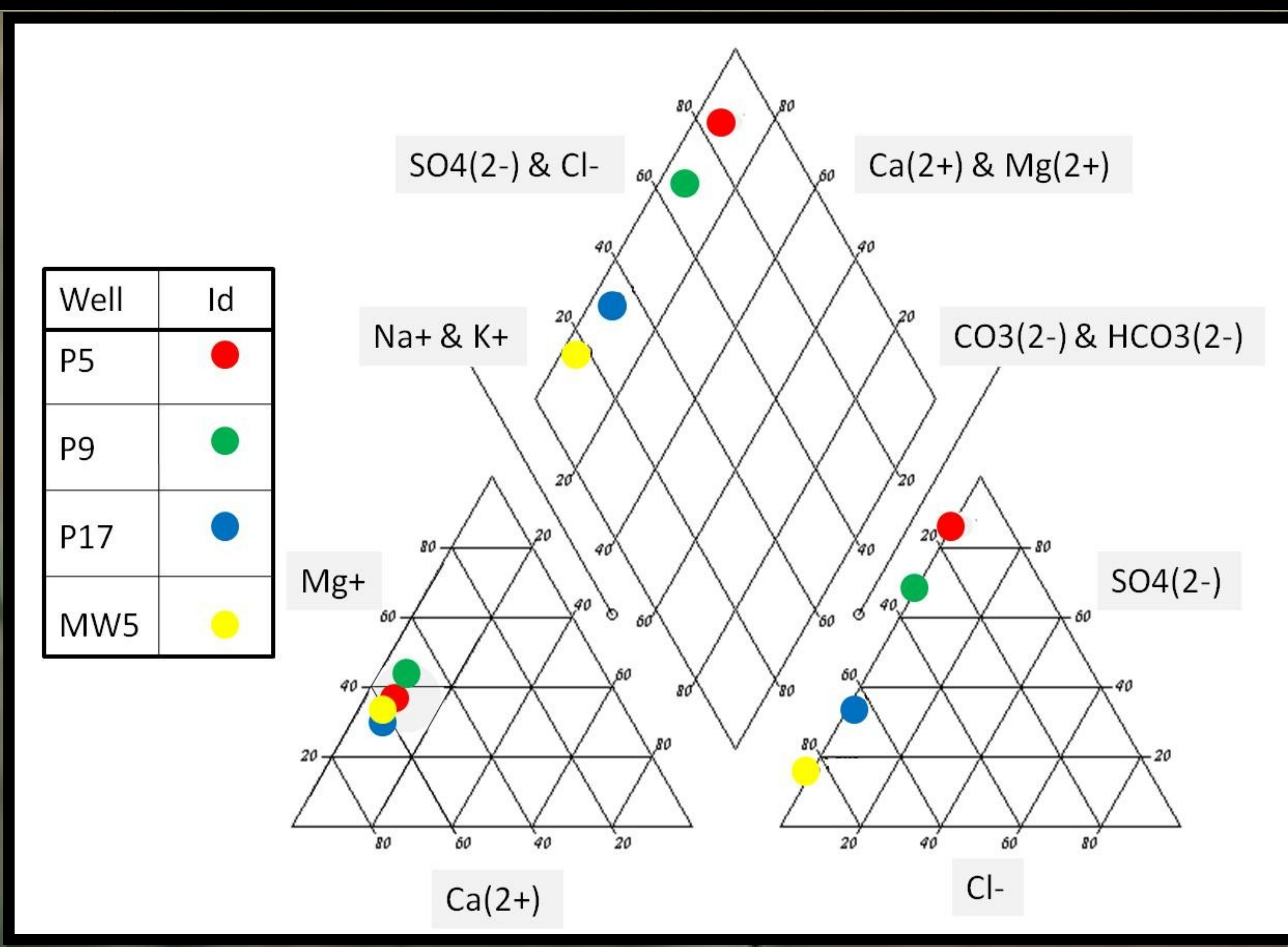
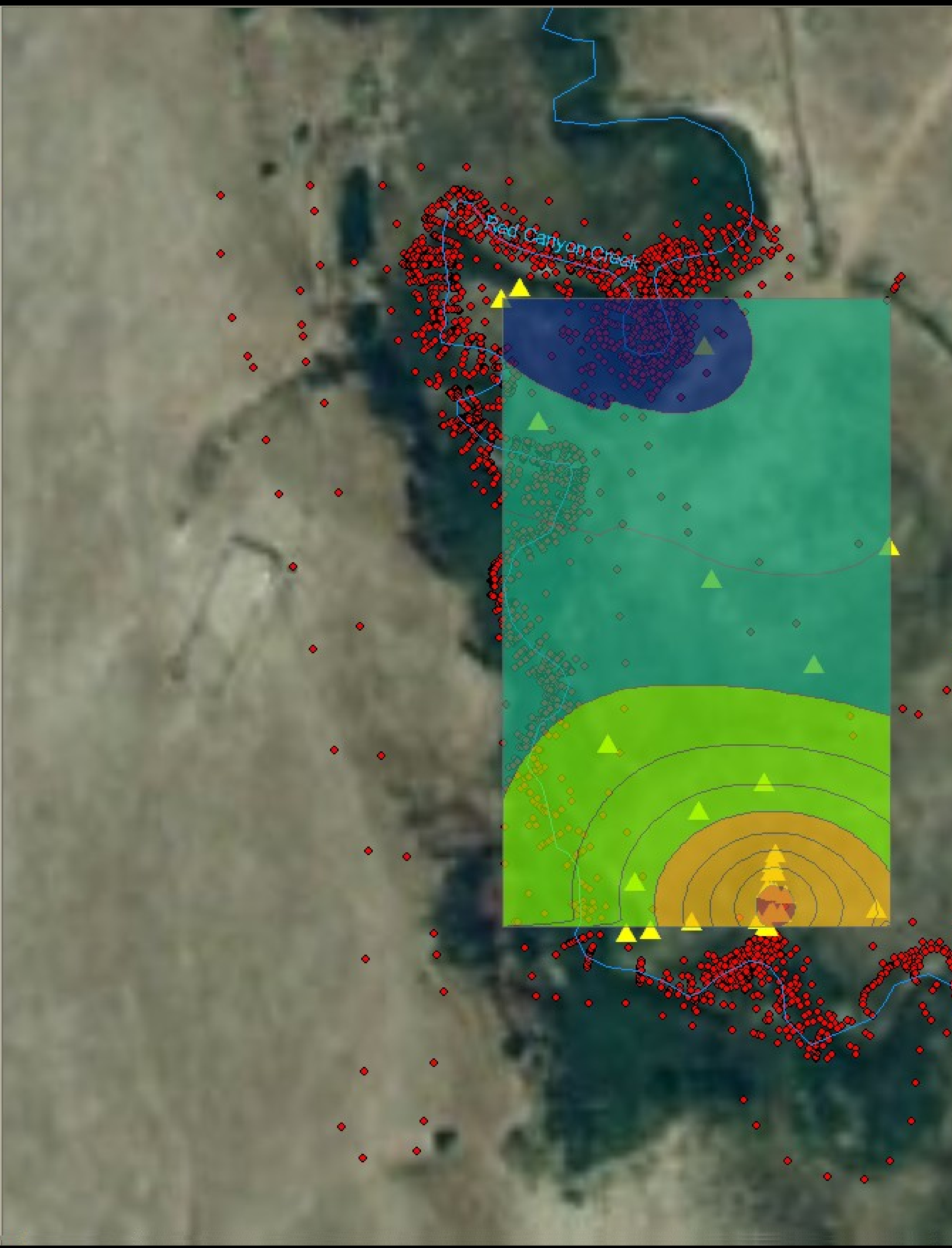




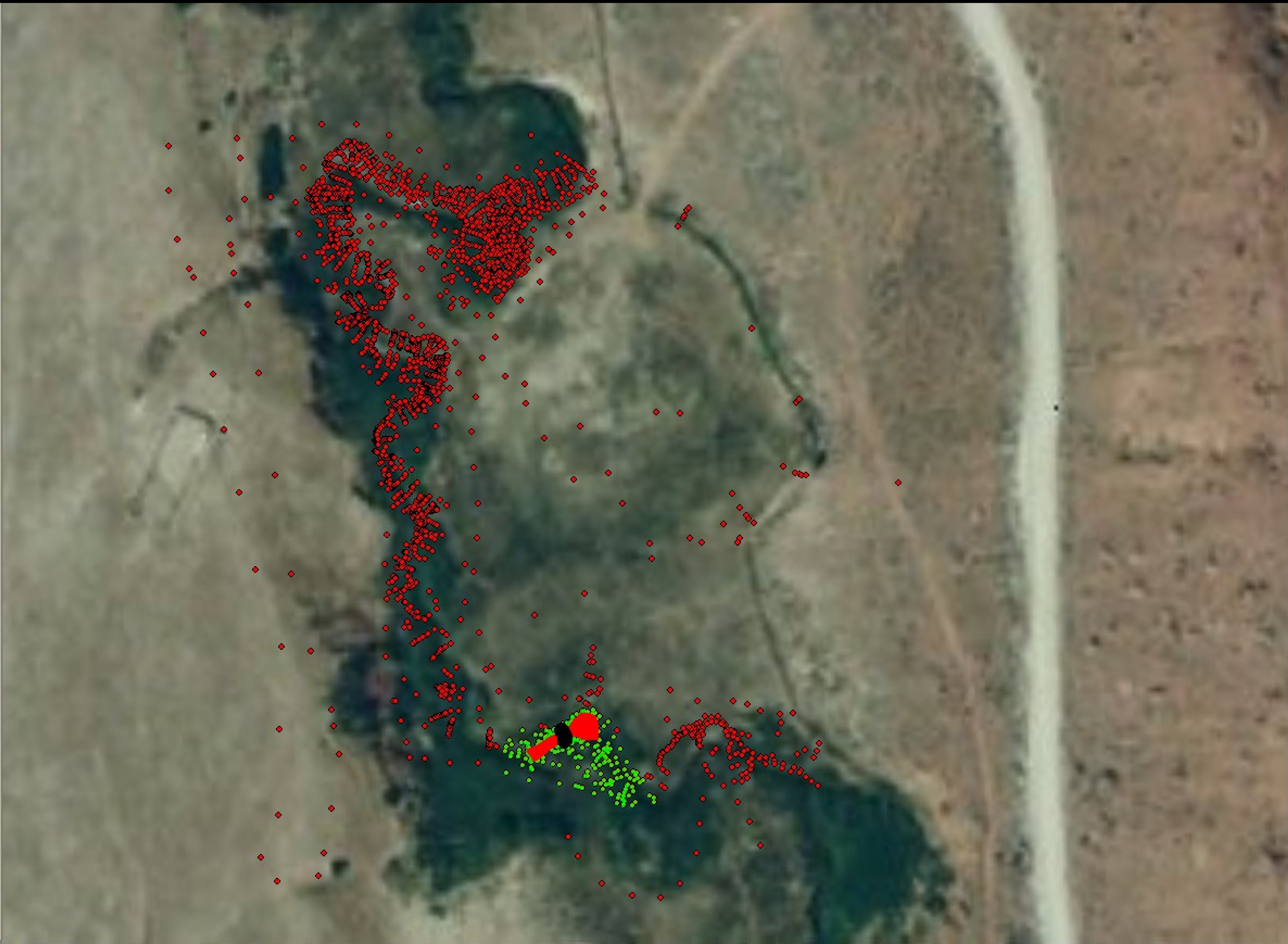




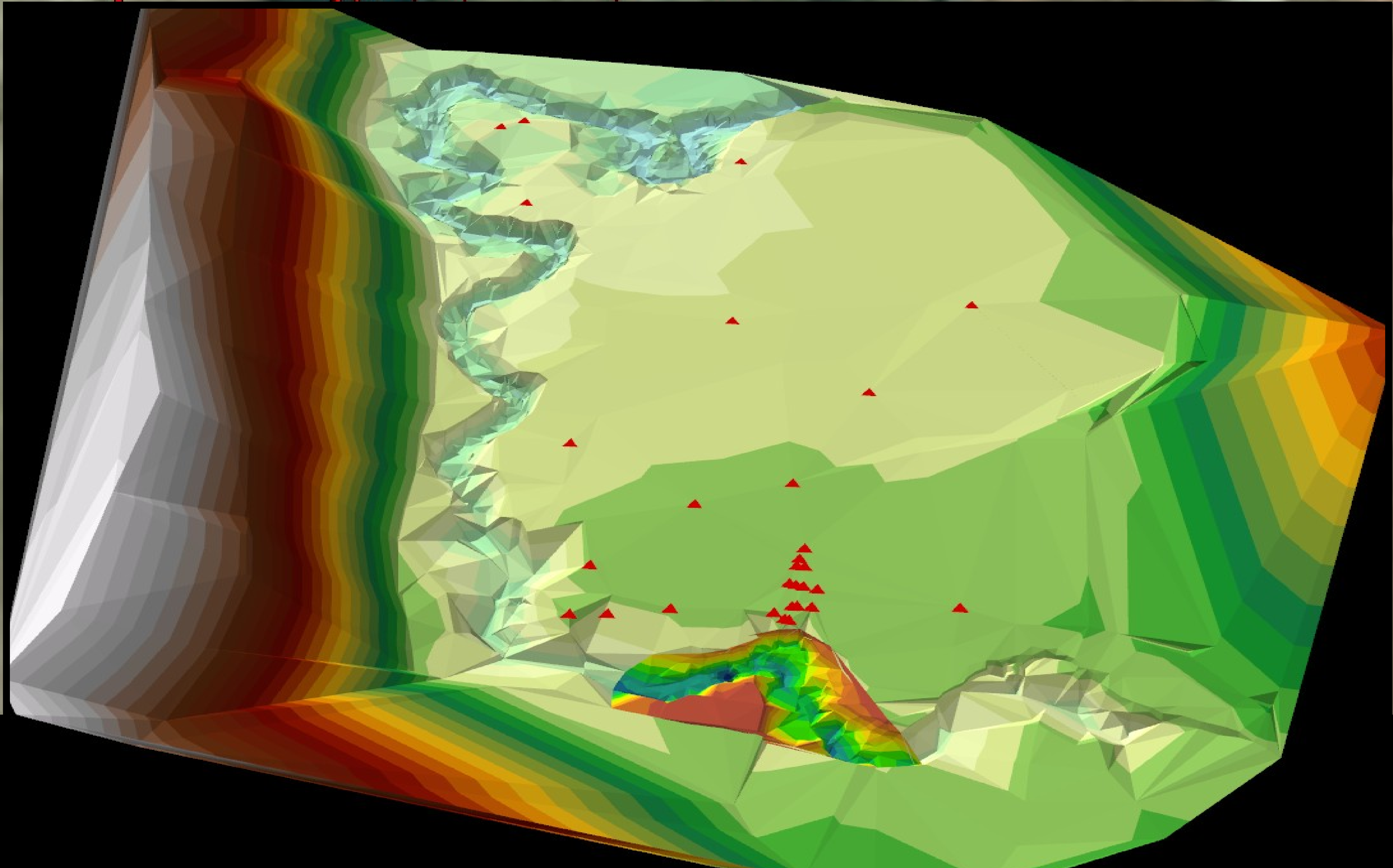




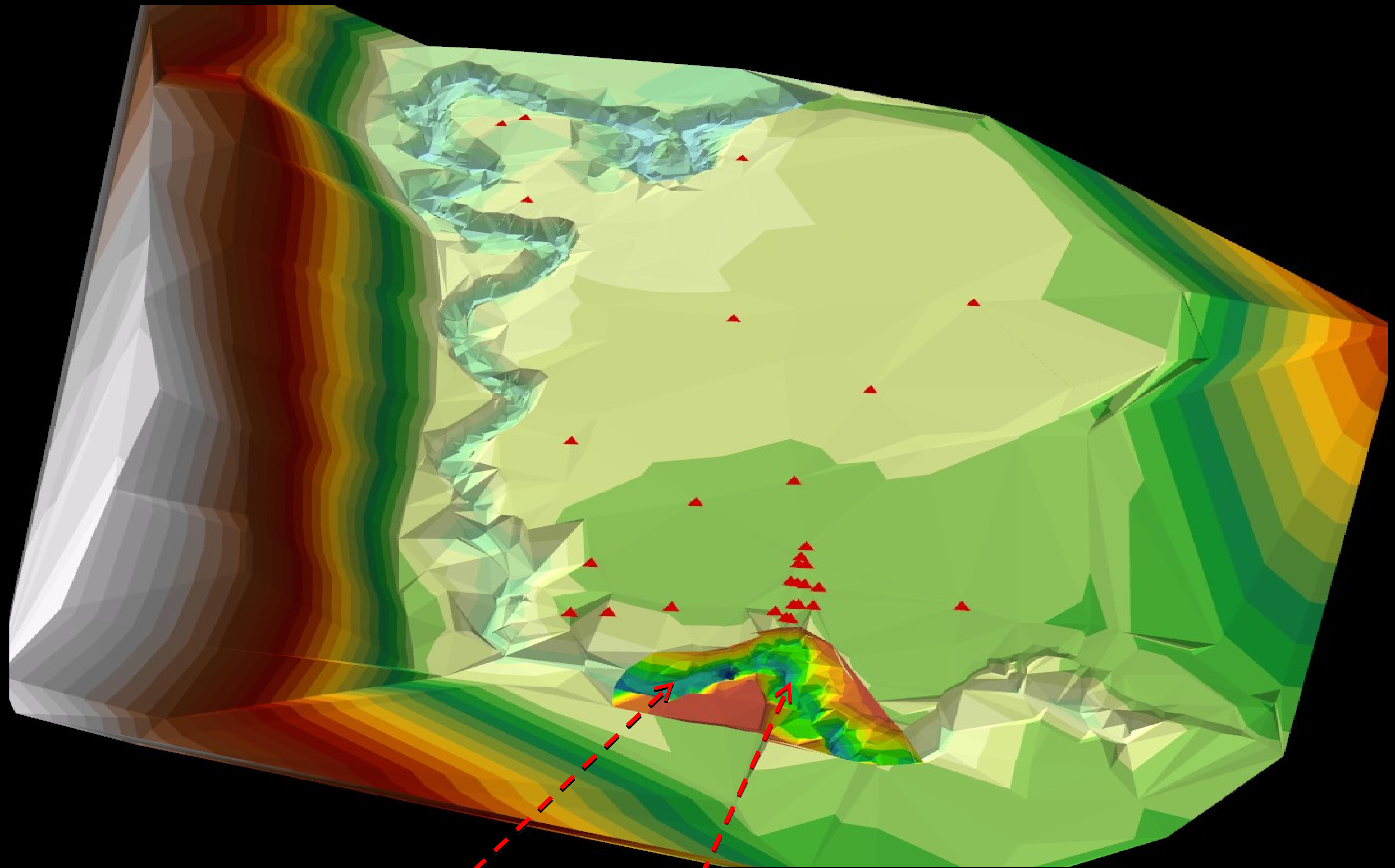




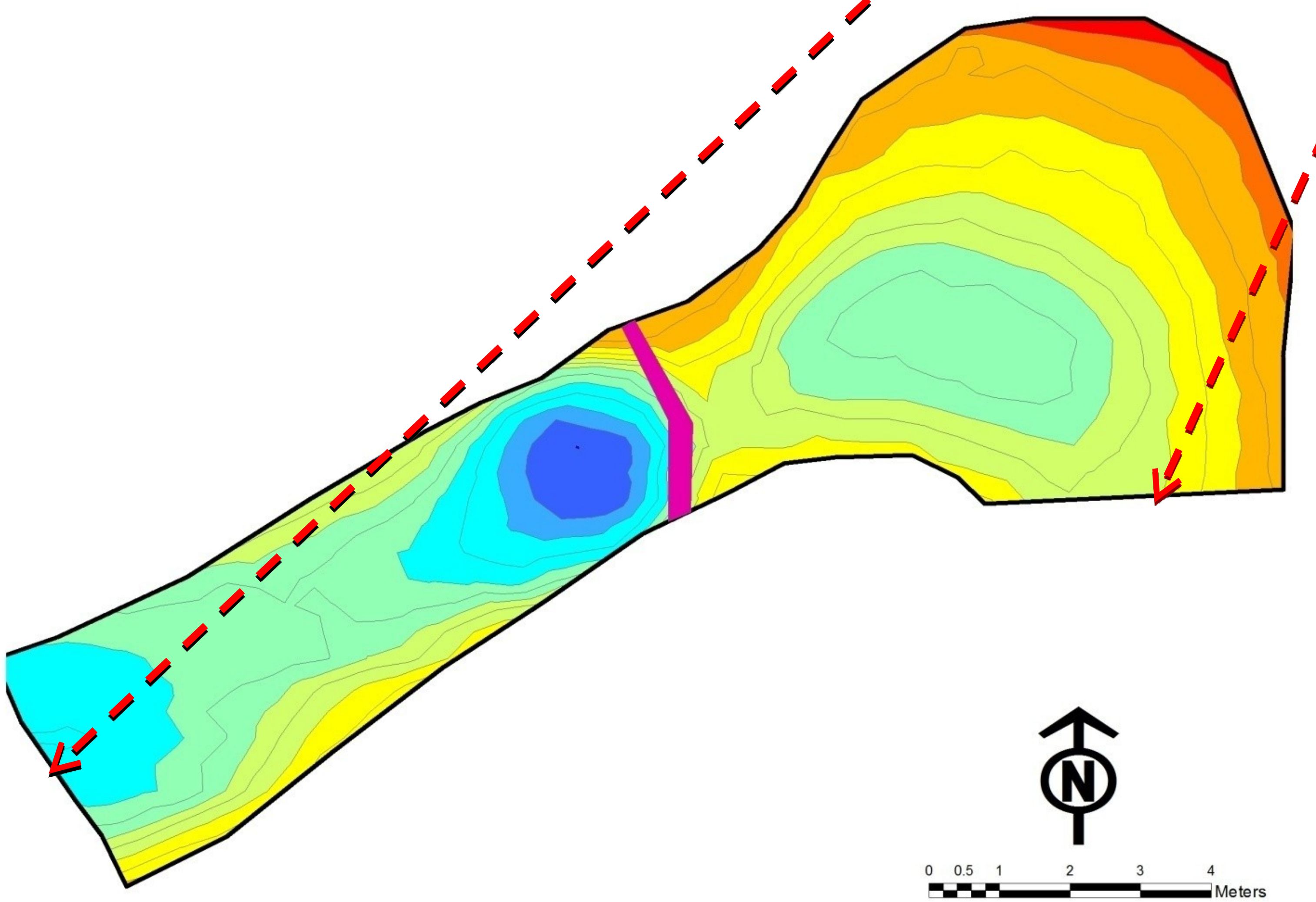




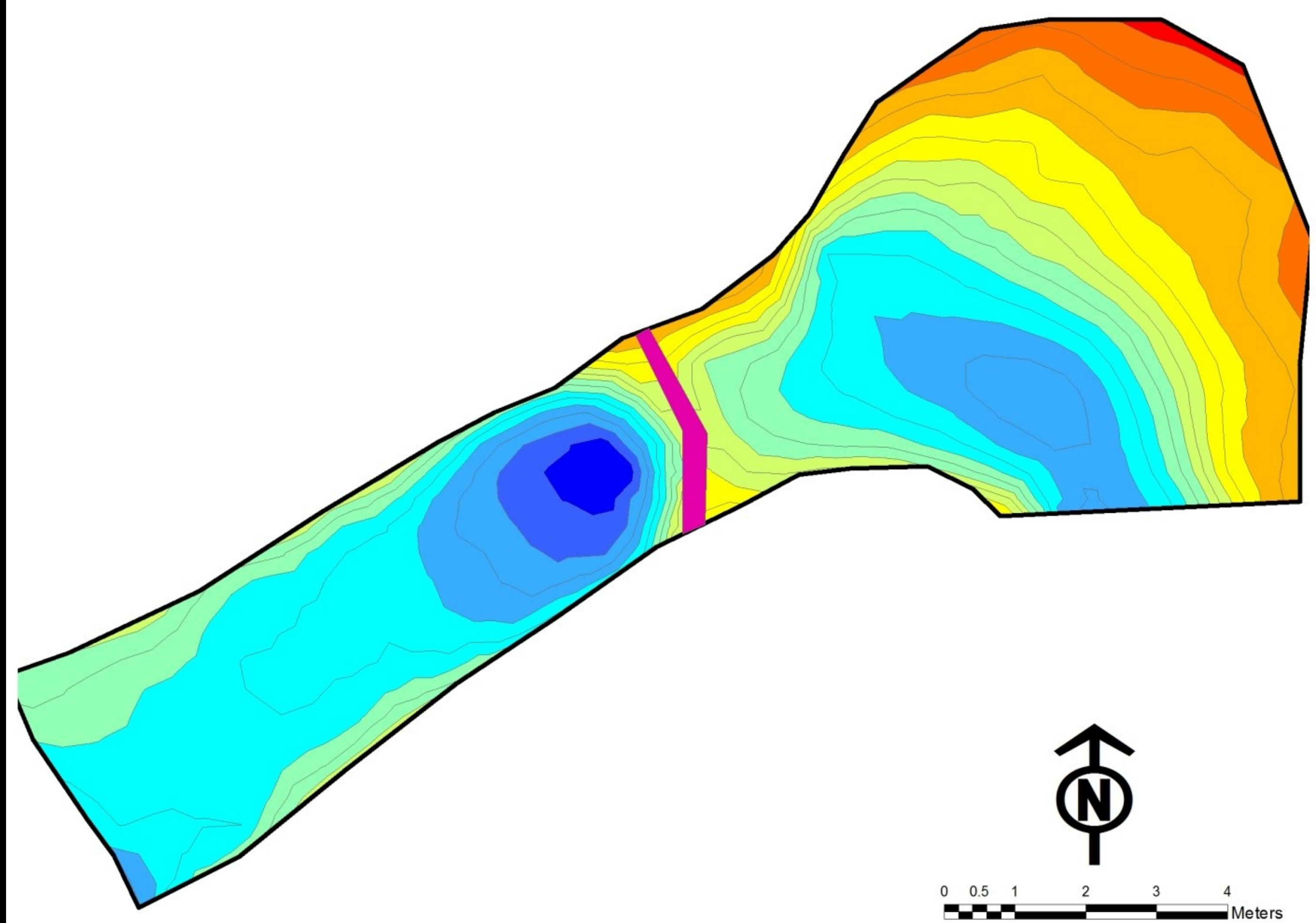




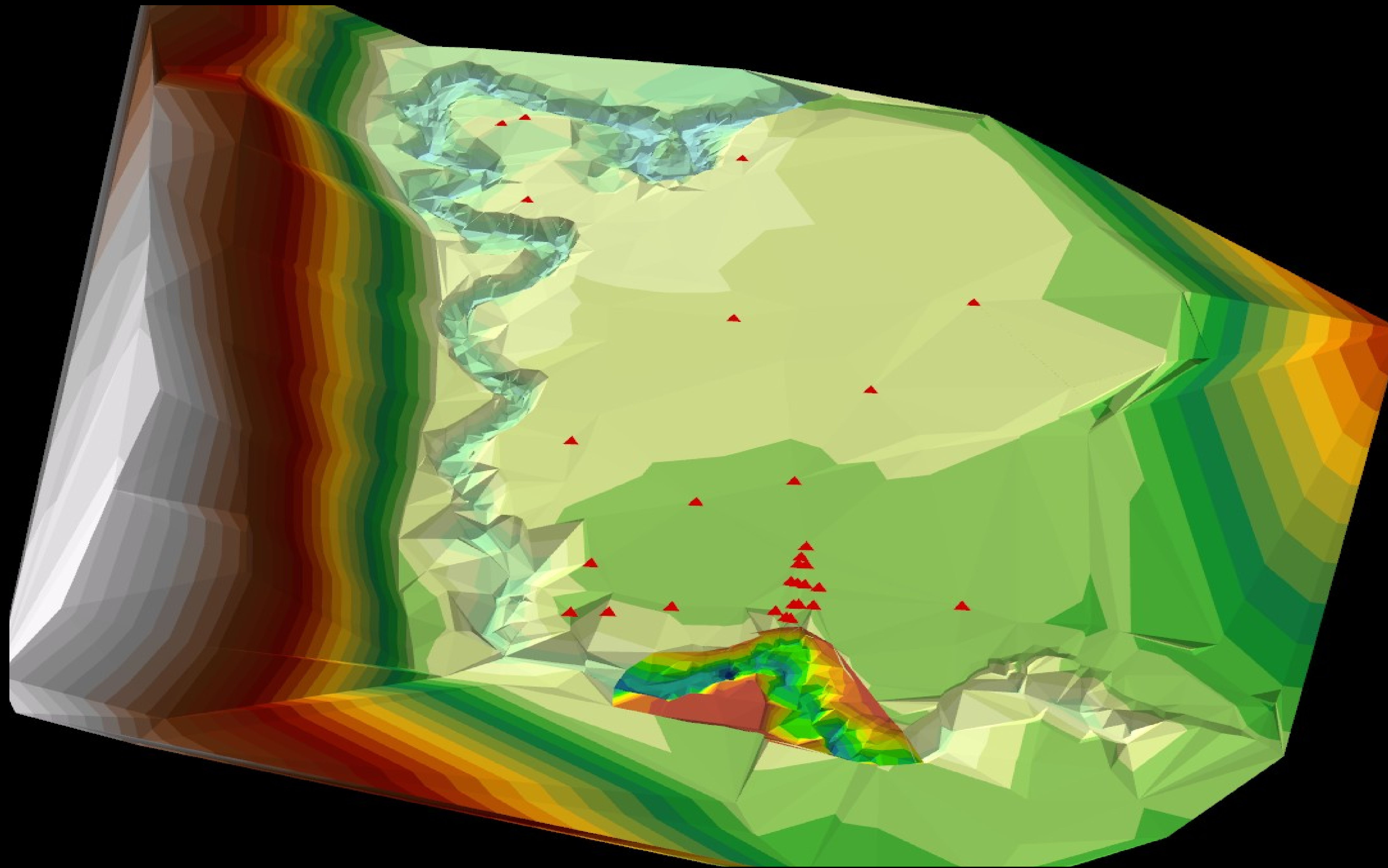
2005 Streambed Topography



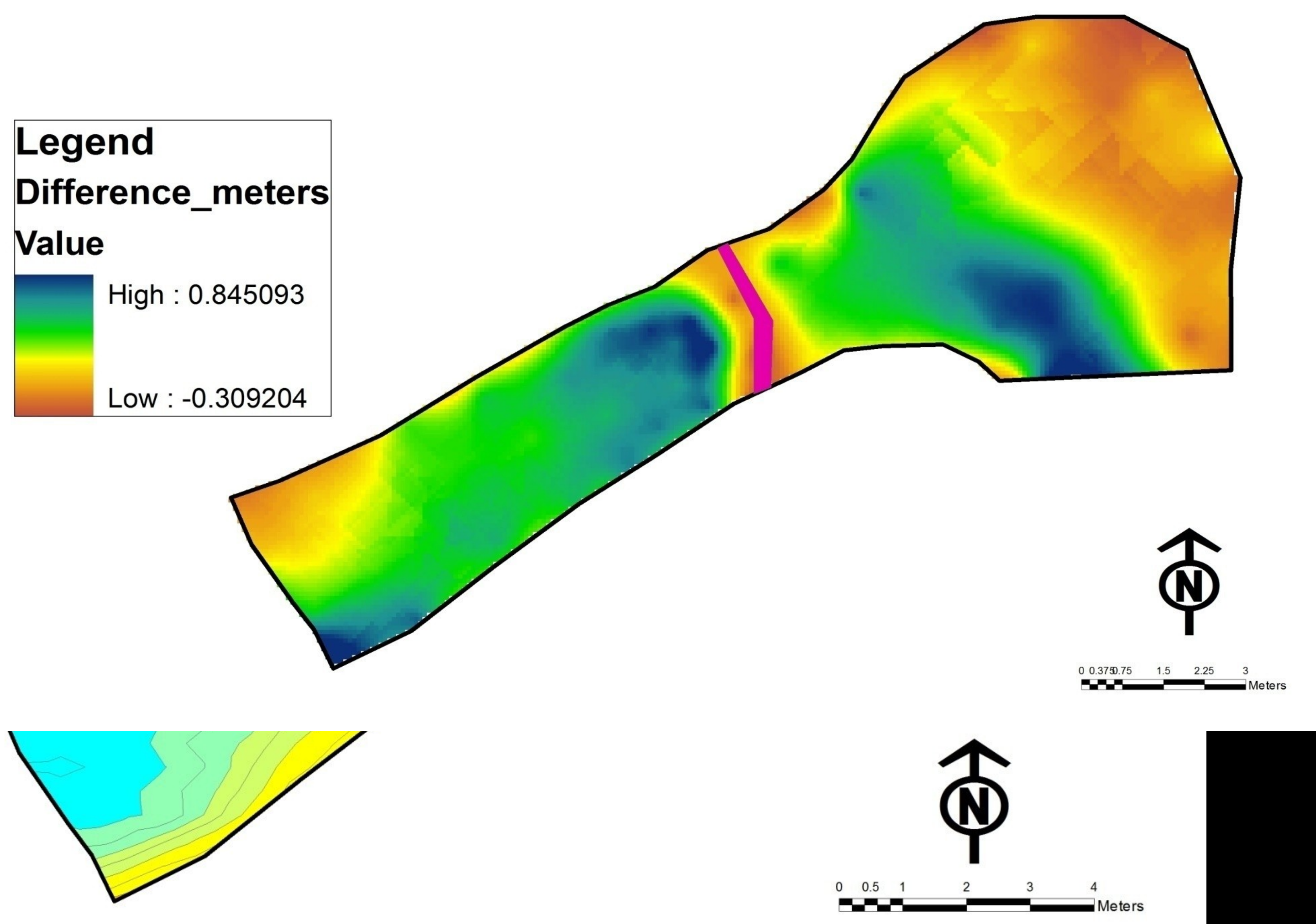
2008 Streambed Topography



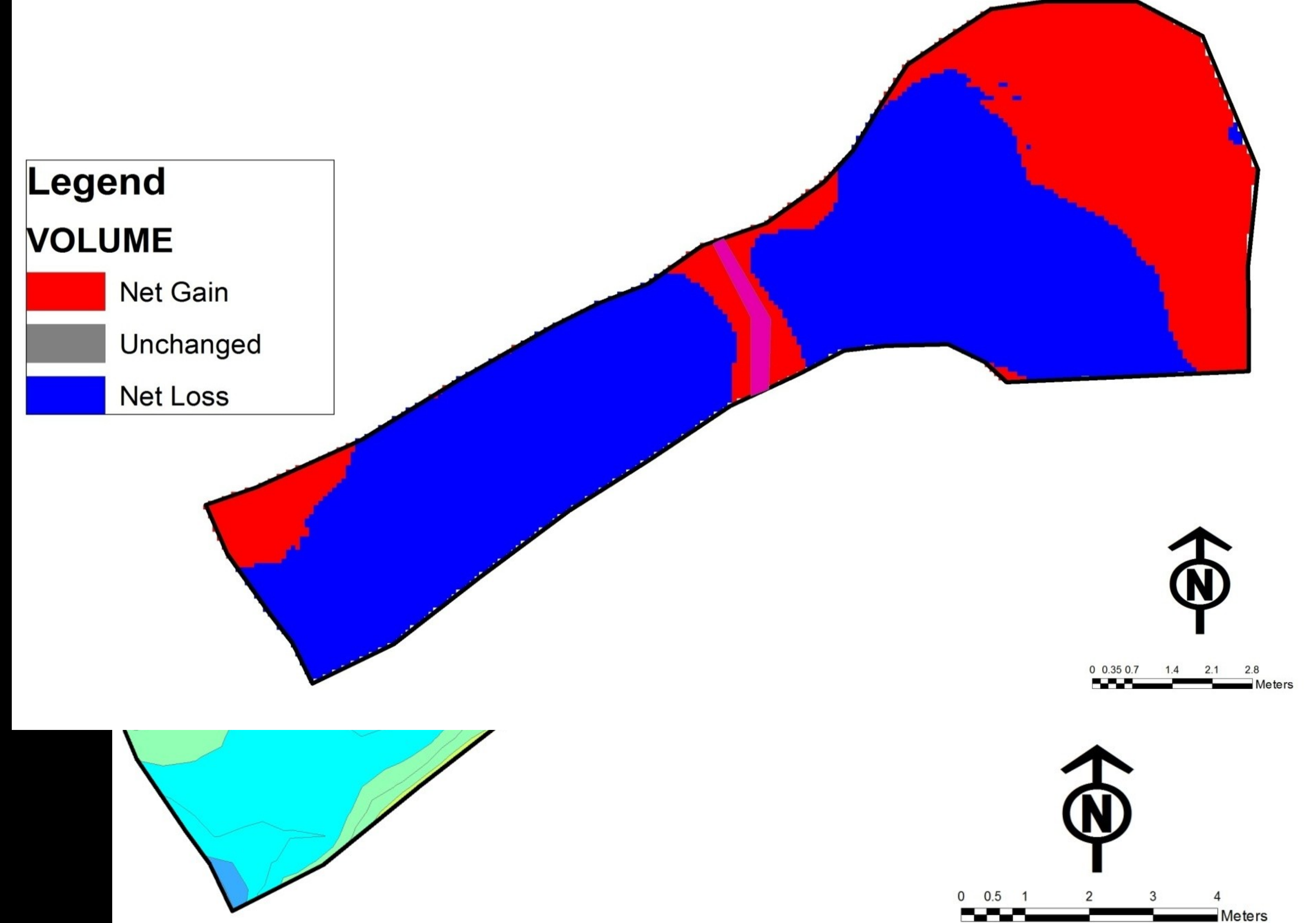




Change in Topography: 2005 - 2008



Change in Topography: 2005 - 2008









# Hydrogeomorphology

At Red Canyon Creek In Lander, Wyoming

James Mastroianni

JDM359@Cornell.edu

