



Shapefile to KML

What are the
options



Support

Search Support Pages

Include ArcGIS 10 Content

You are here: > [ArcScripts](#) > [Search Results](#) > [Script Details](#)

[Login](#) | [Feedback](#) | [Help](#)

Export to KML 2.5.4

[download](#)

[contact author](#) | [download help](#) | [report inappropriate content](#)

| | |
|----------------|--------------------------|
| Author | Kevin Martin |
| File Name | Export_to_KML_V2_5_4.zip |
| Language | Visual Basic |
| Last Modified | Aug 17 2010 |
| Status of work | Public Domain |
| Software | ArcGIS Desktop |
| File Size | 346.08 kb |
| Downloads | 115652 |

ArcScripts is intended for the free exchange of scripts and tools related to ESRI software products. Please alert the moderator if this script is a demo, trial-version, or an advertisement for a retail product.

Export to KML 2.5.4



Support

Search Support Pages

Include ArcGIS 10 Co

You are here: > [ArcScripts](#) > [Search Results](#) > [Script Details](#)

[Login](#) | [Feedback](#) | [Help](#)

Shape2KML - export shapefiles and raster layers to KML

[download](#)

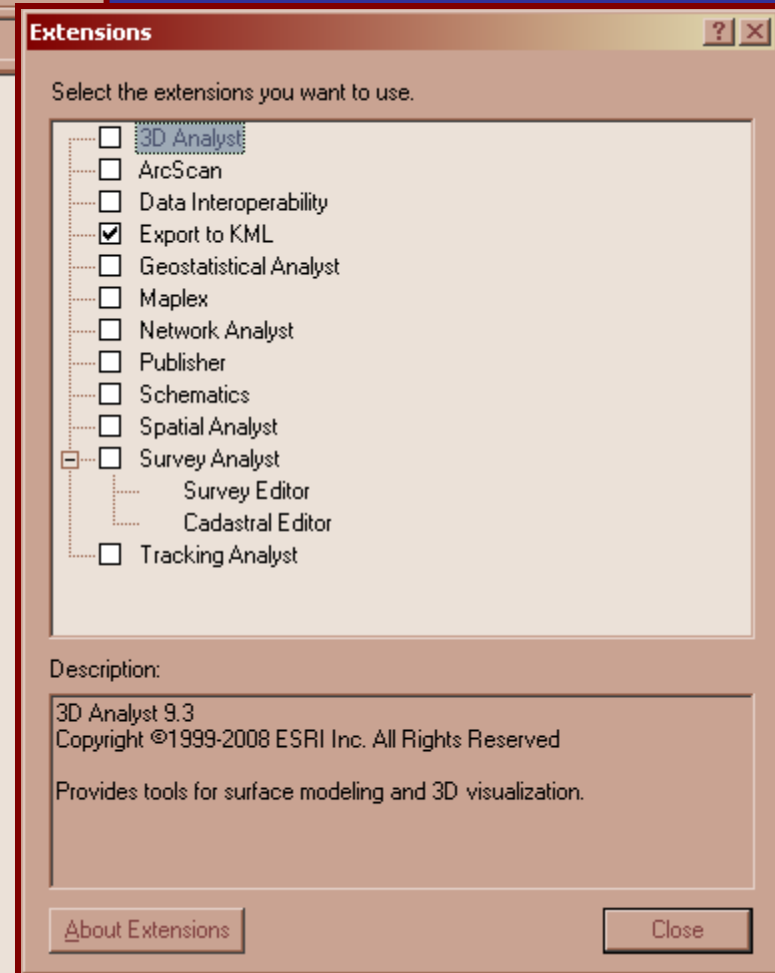
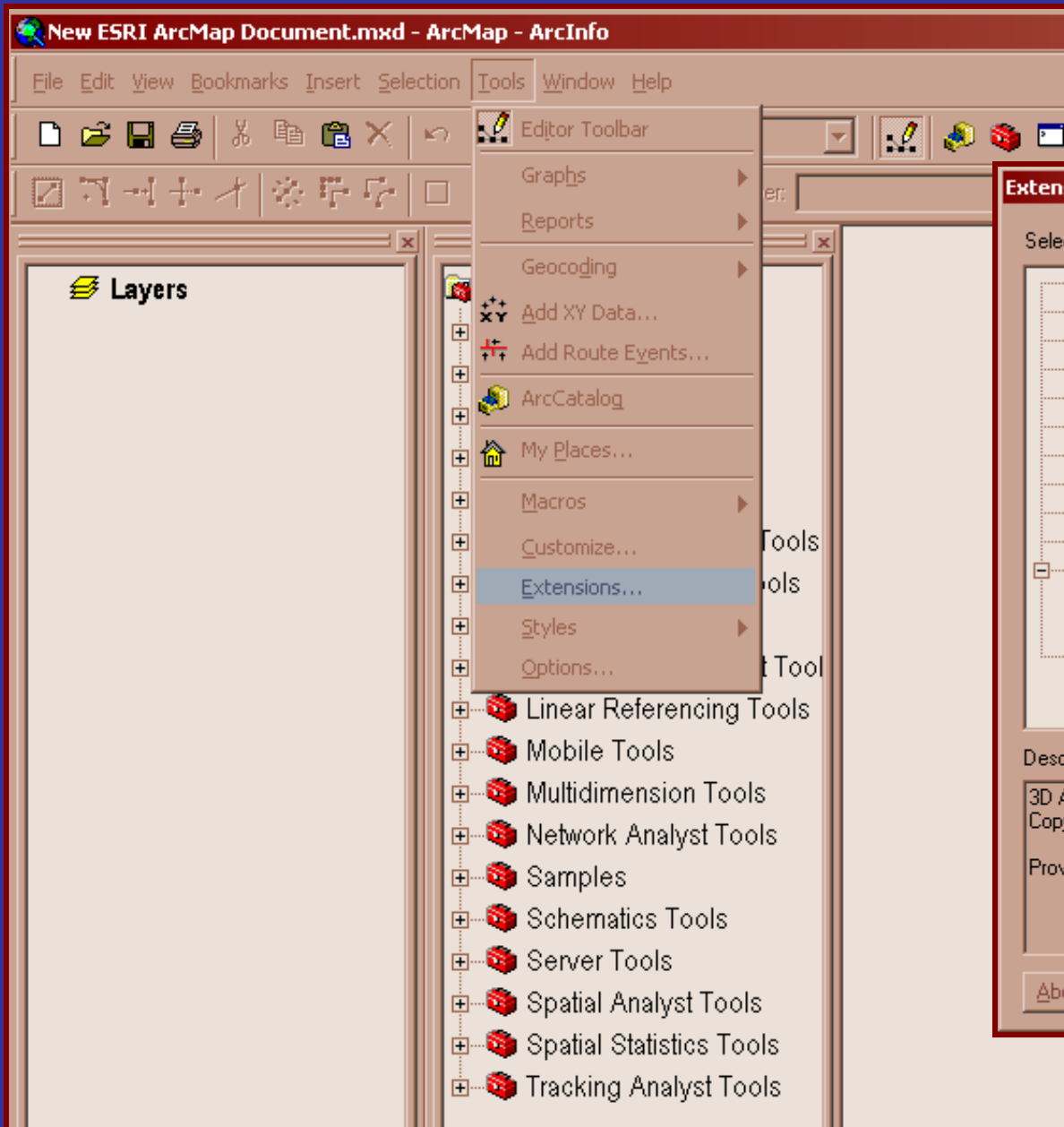
[contact author](#) | [download help](#) | [report inappropriate content](#)

| | |
|----------------|---|
| Author | Matei Domnita |
| File Name | Shape2KML.zip |
| Language | C# |
| Last Modified | Jan 5 2010 |
| Status of work | Creative Commons Attribution-Only License |
| Software | ArcGIS Desktop |
| File Size | 13604.02 kb |
| Downloads | 7272 |

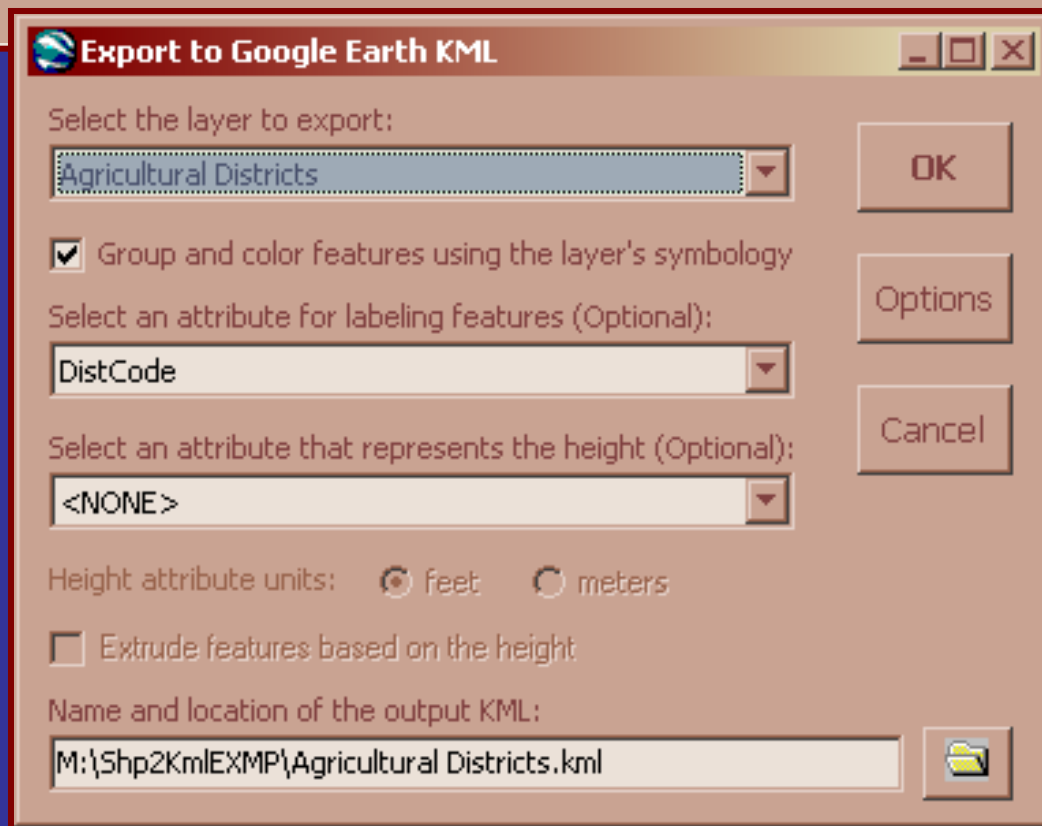
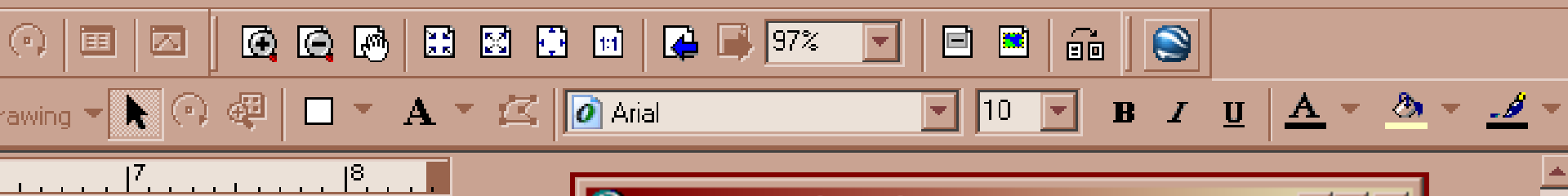
ArcScripts is intended for the free exchange of scripts and tools related to ESRI software products. Please alert the moderator if this script is a demo, trial-version, or an advertisement for a retail product.

Shape2KML

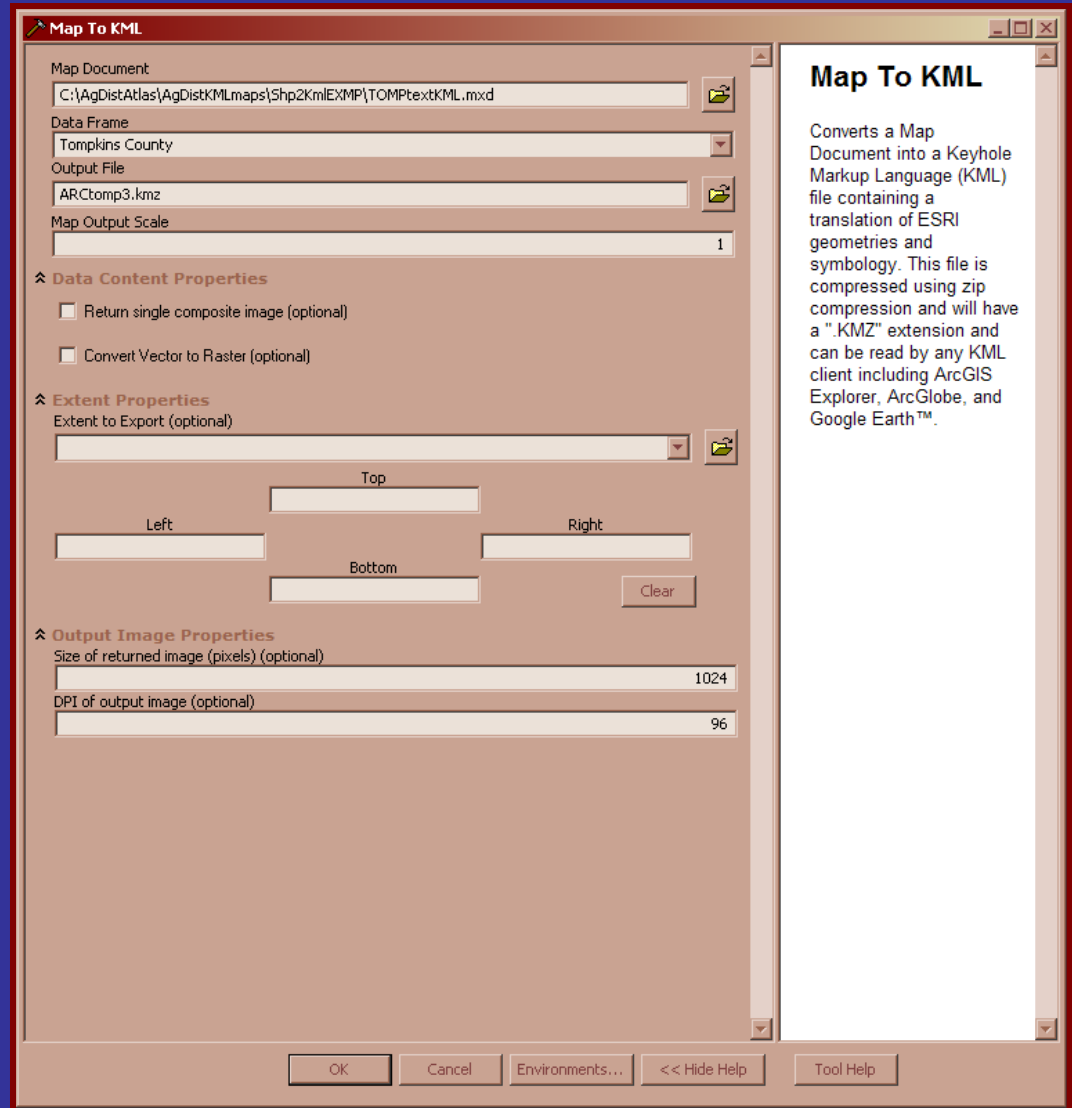
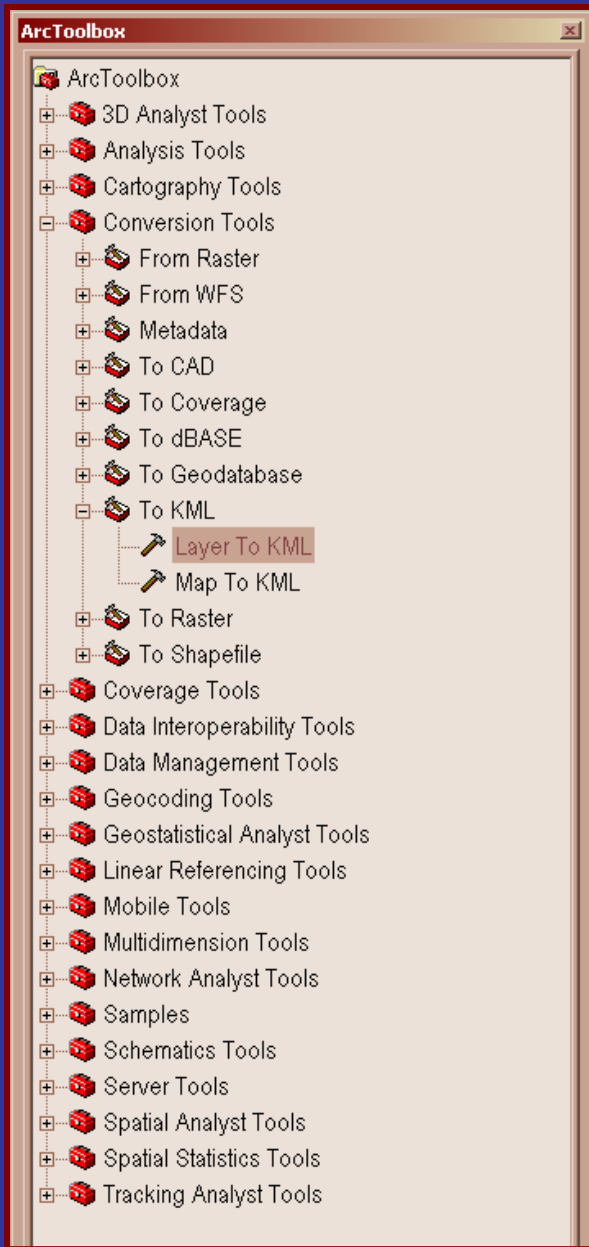
Access the tools



Export to KML 2.5.4

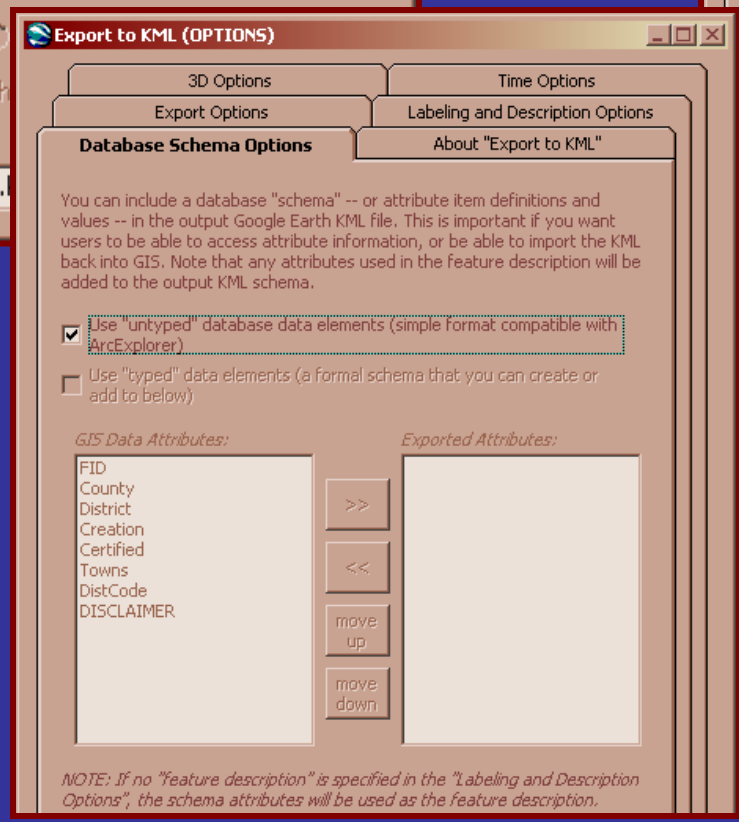
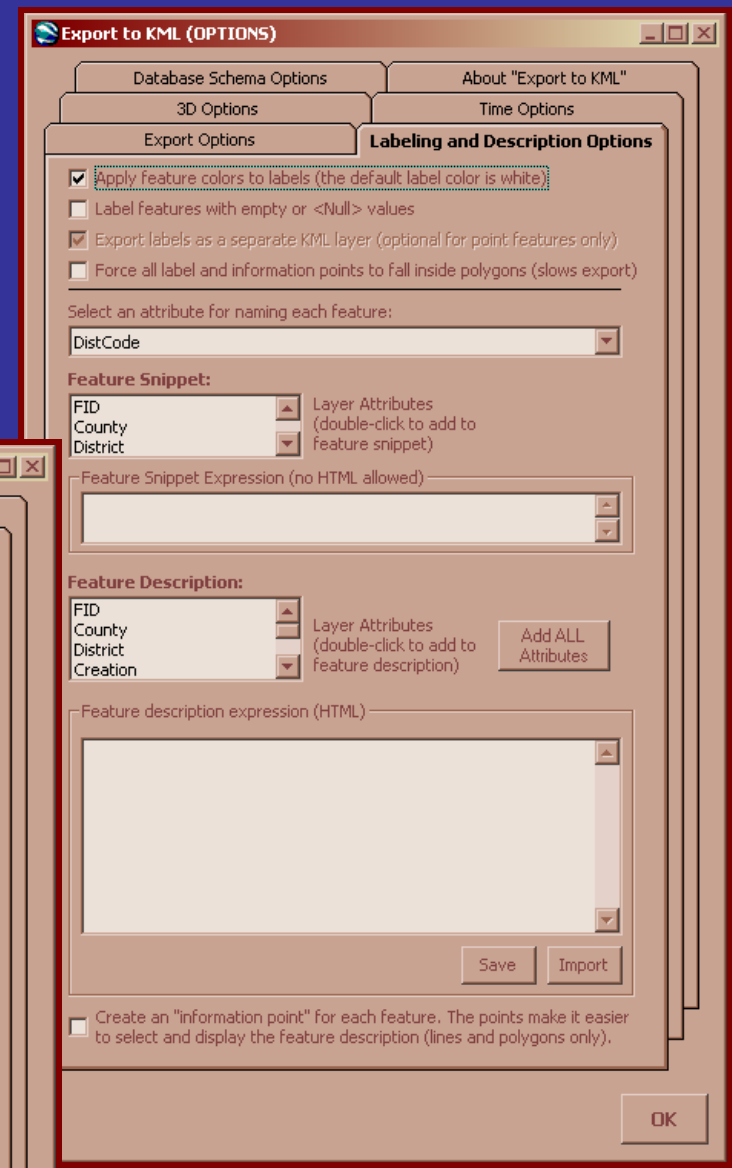
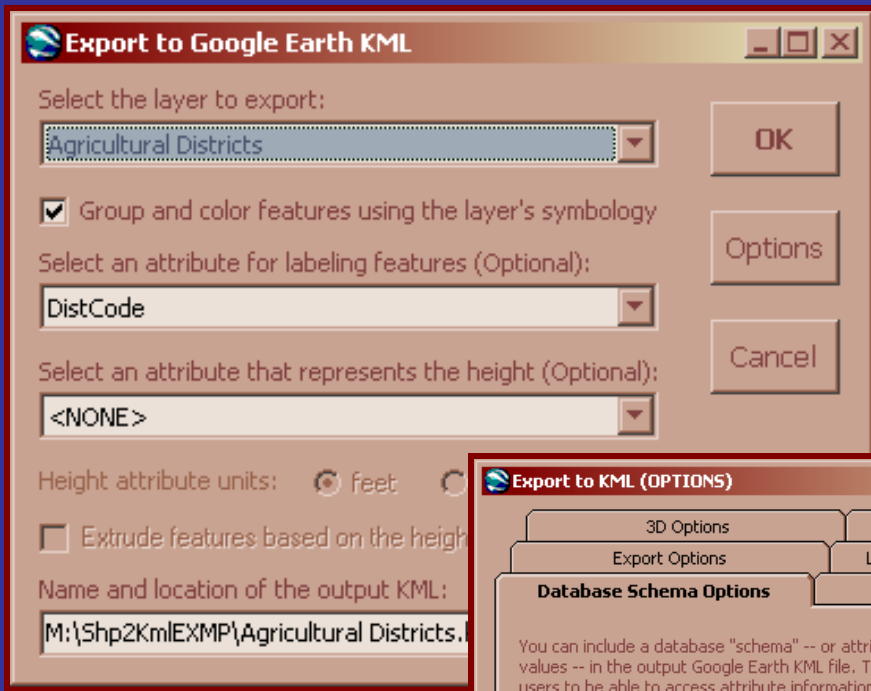


Export to KML 2.5.4



Shape2KML

Setting Properties



Export to KML 2.5.4

Layer Properties



General | Source | Selection | Display | Symbology | Fields | Definition Query | Labels | Joins & Relates | HTML Popup

Layer Name: TOMPtwns Visible

Description: A layer of the town boundaries in the NYS county of TOMPKINS

Credits:

Scale Range

You can specify the range of scales at which this layer will be shown:

- Show layer at all scales
 Don't show layer when zoomed:

Out beyond: 1:10,000 (minimum scale)

In beyond: 1:750,000 (maximum scale)

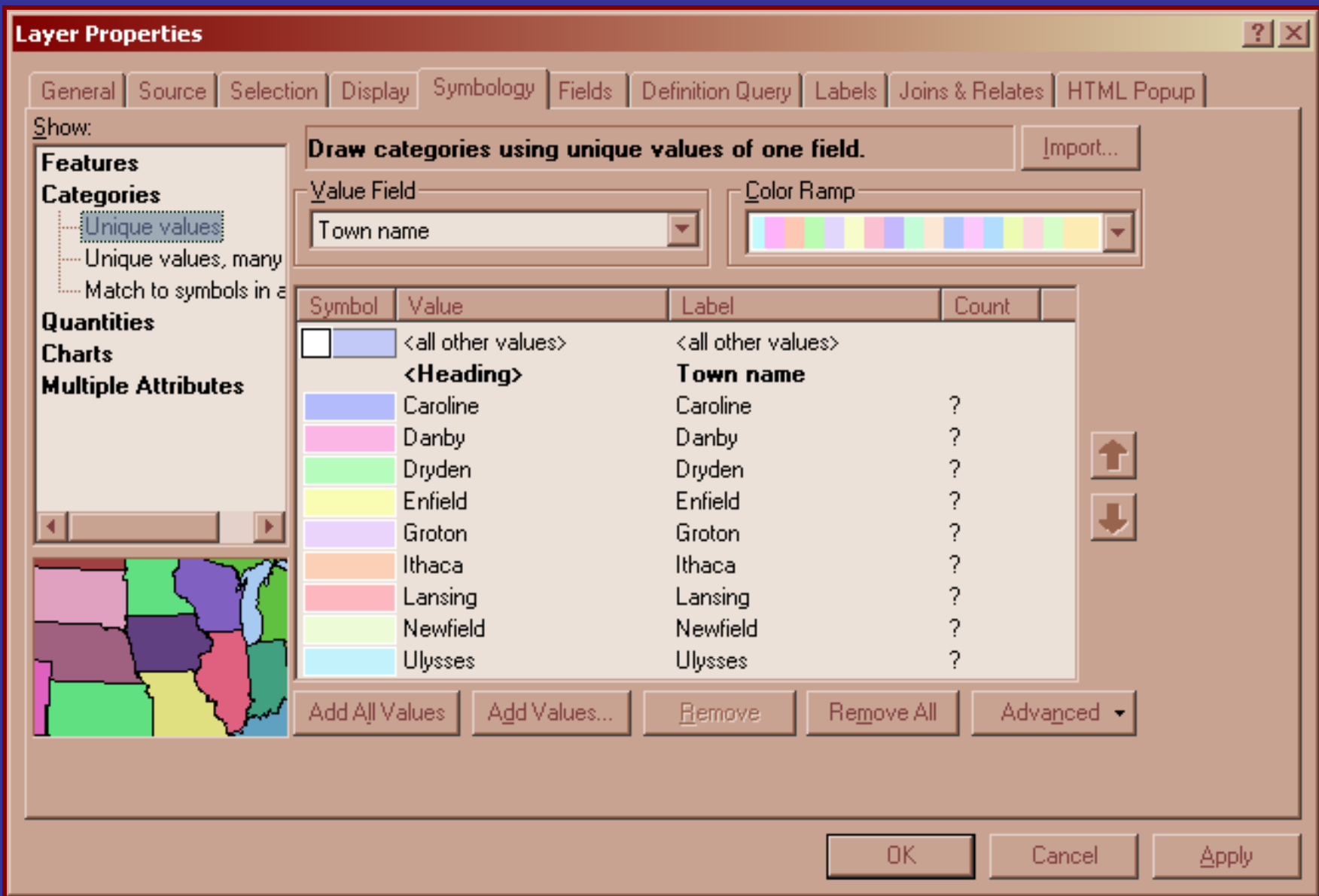


OK

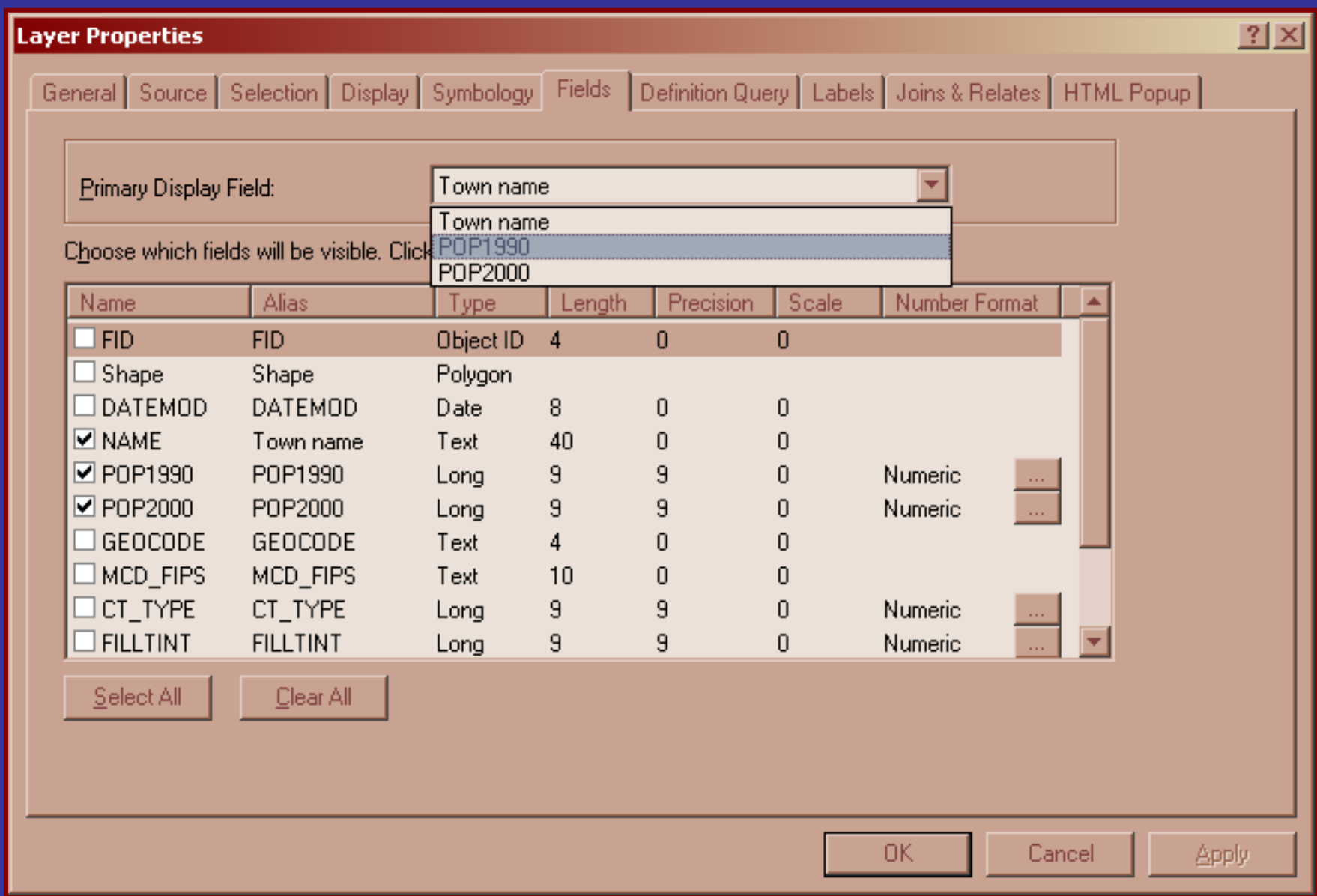
Cancel

Apply

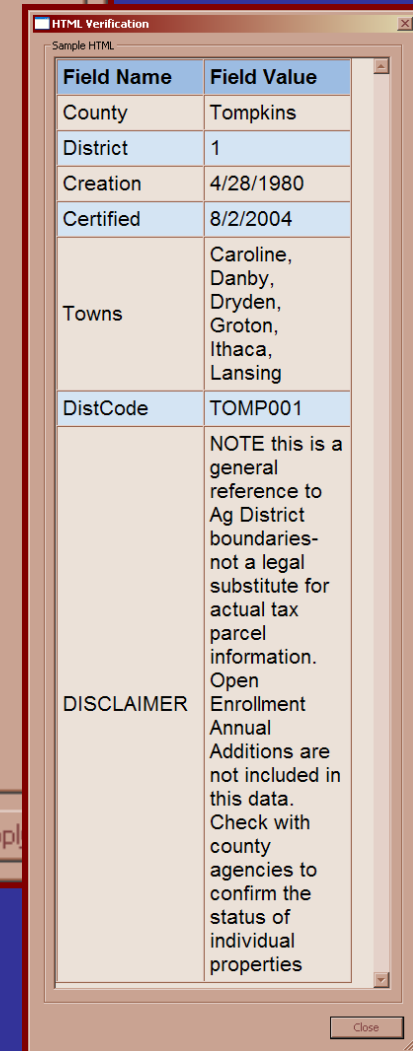
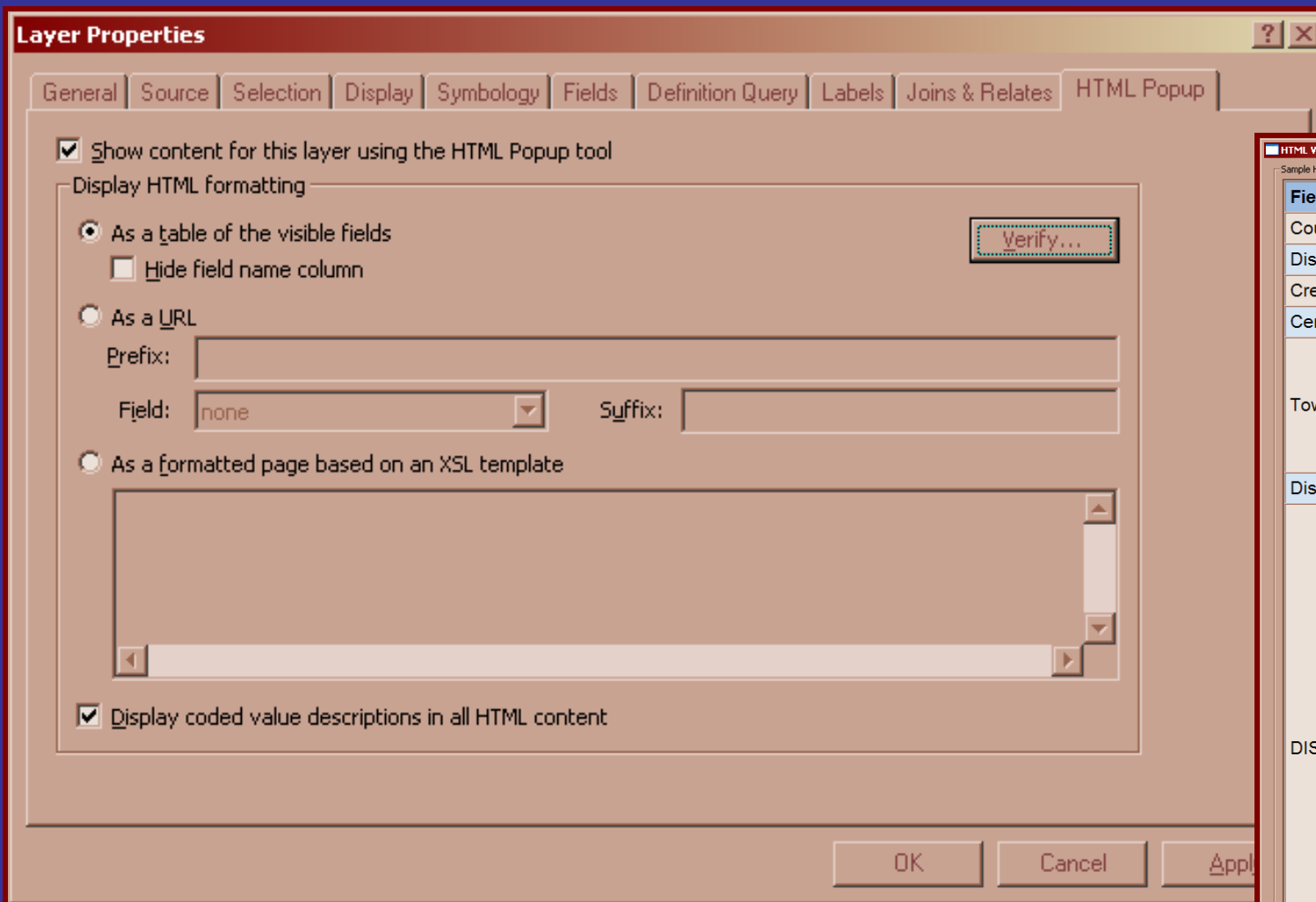
Shape2KML



SYMOBOLOGY

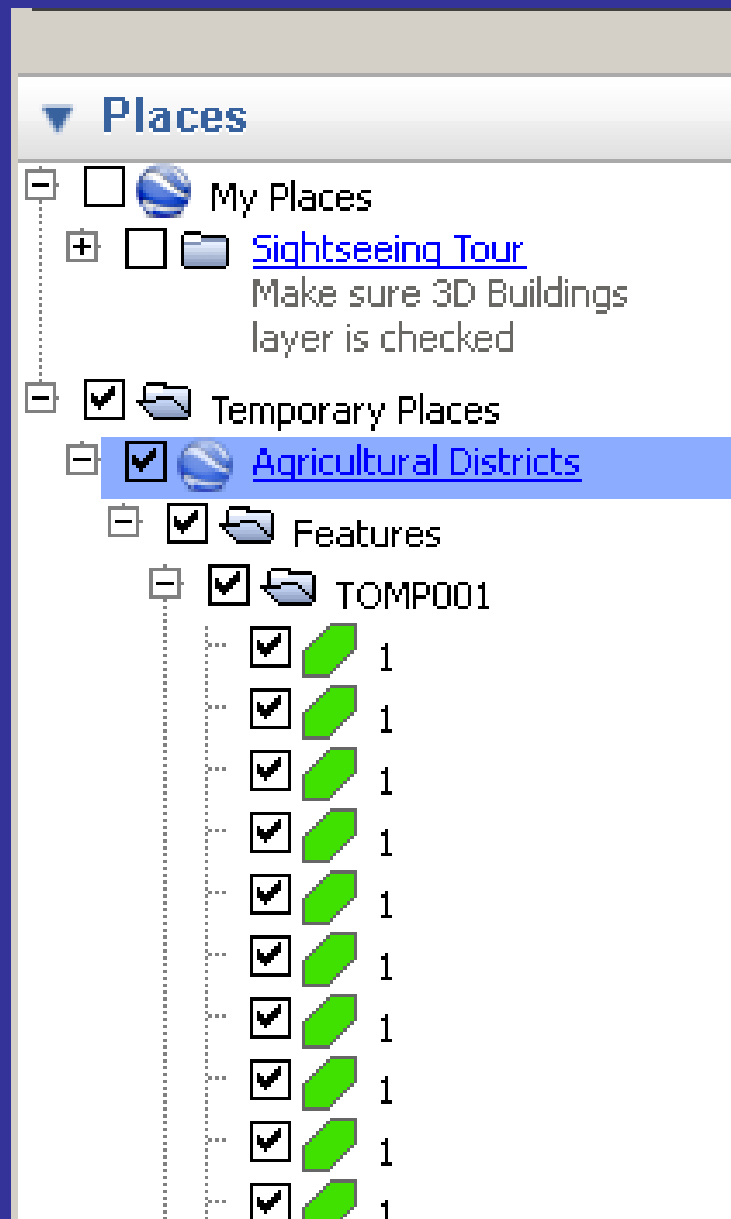


FIELDS

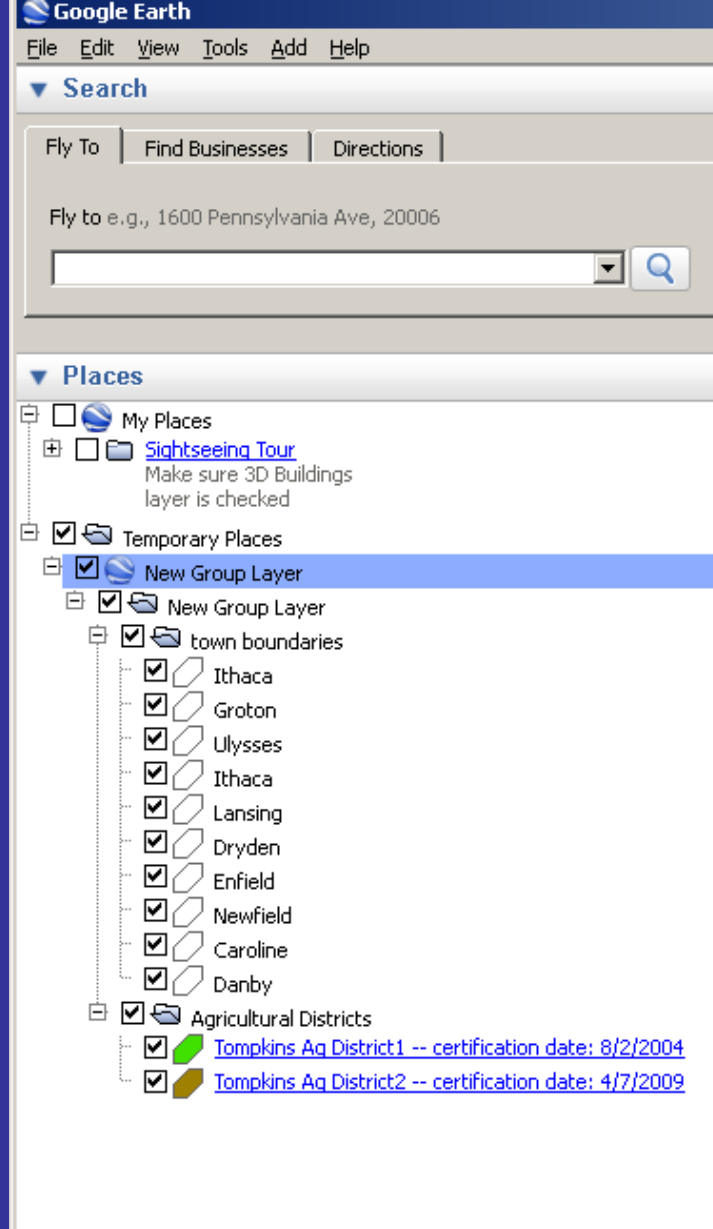


HTML POP-UP

Table of Contents

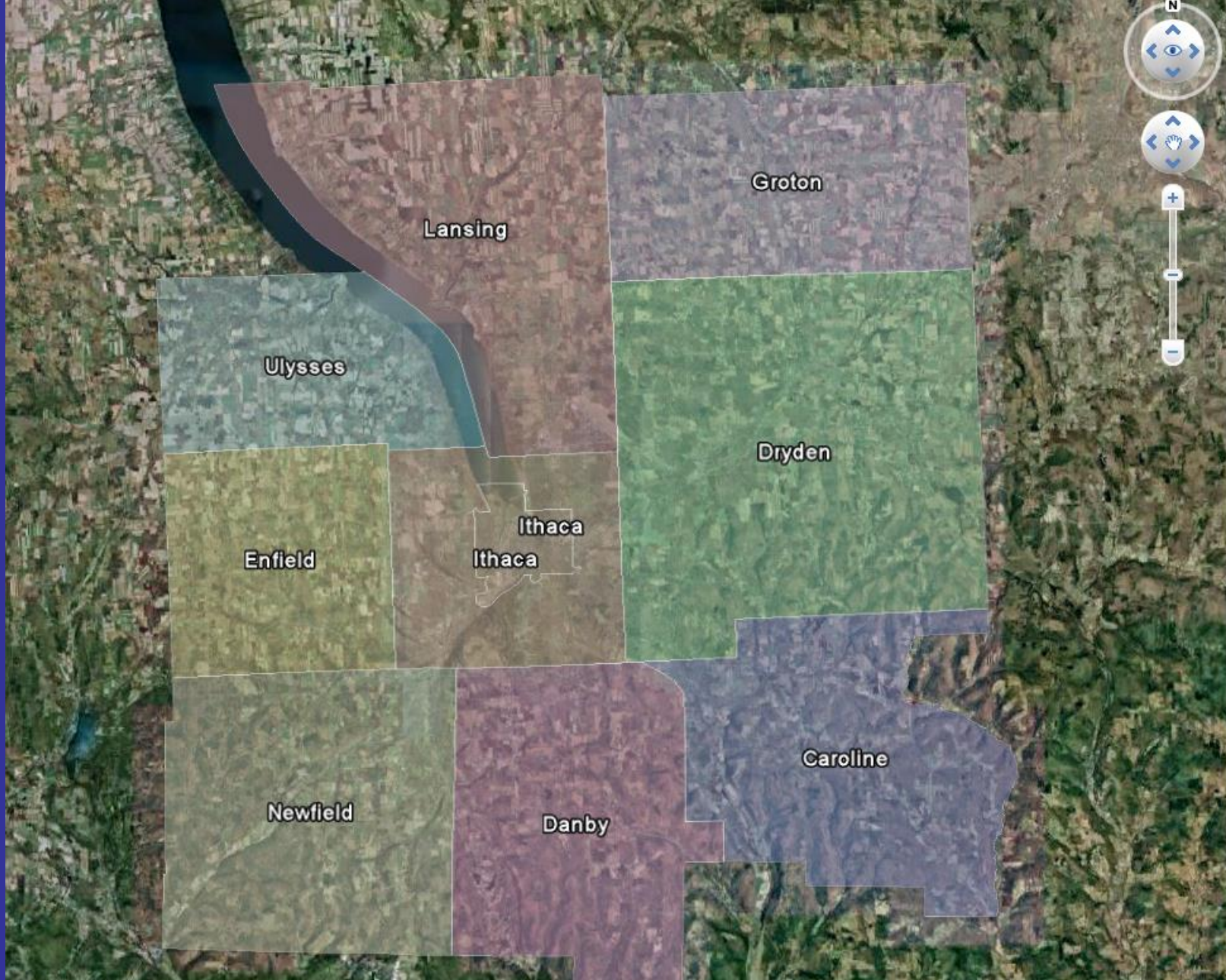


Export to KML 2.5.4



Shape2KML

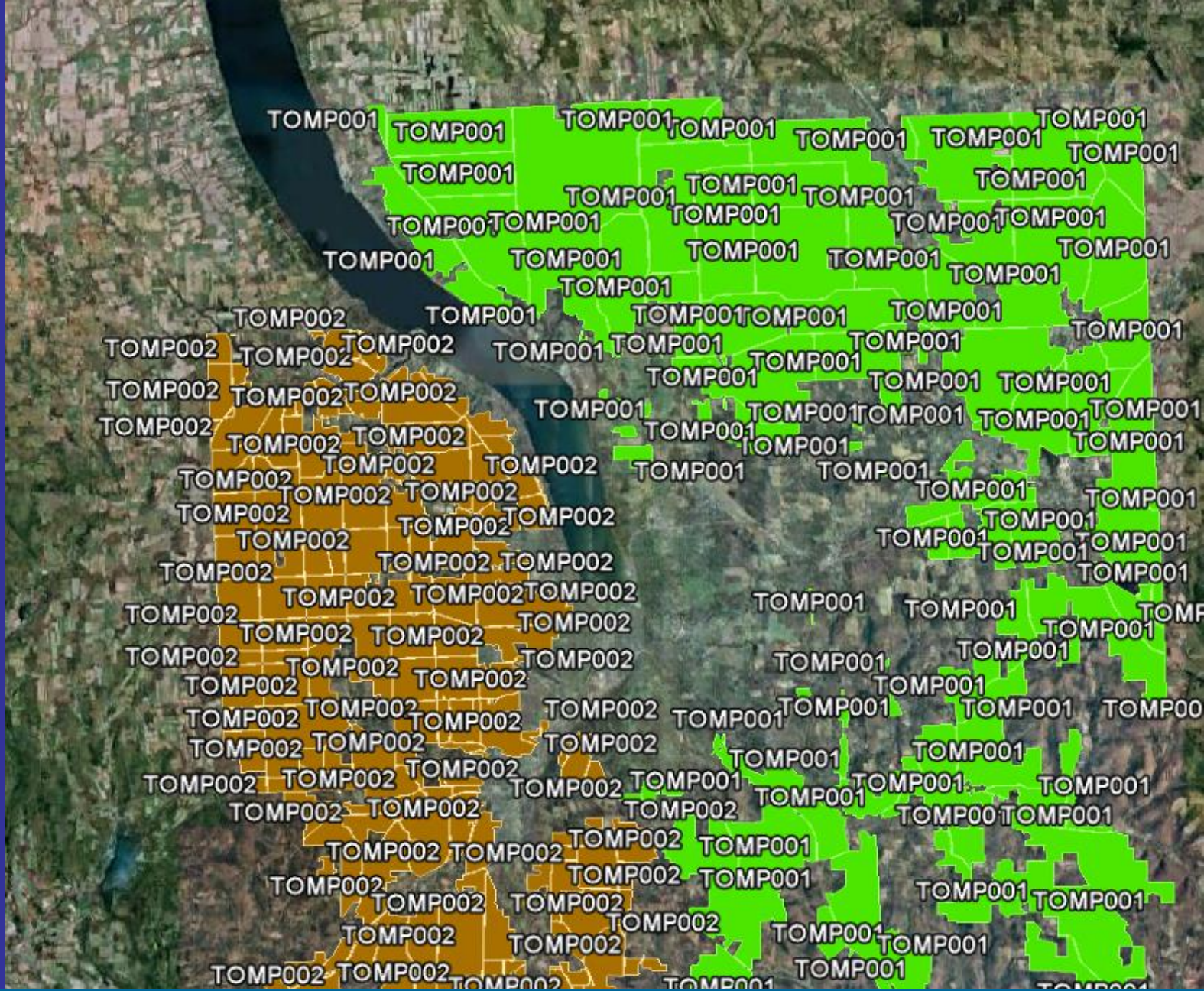
Labels



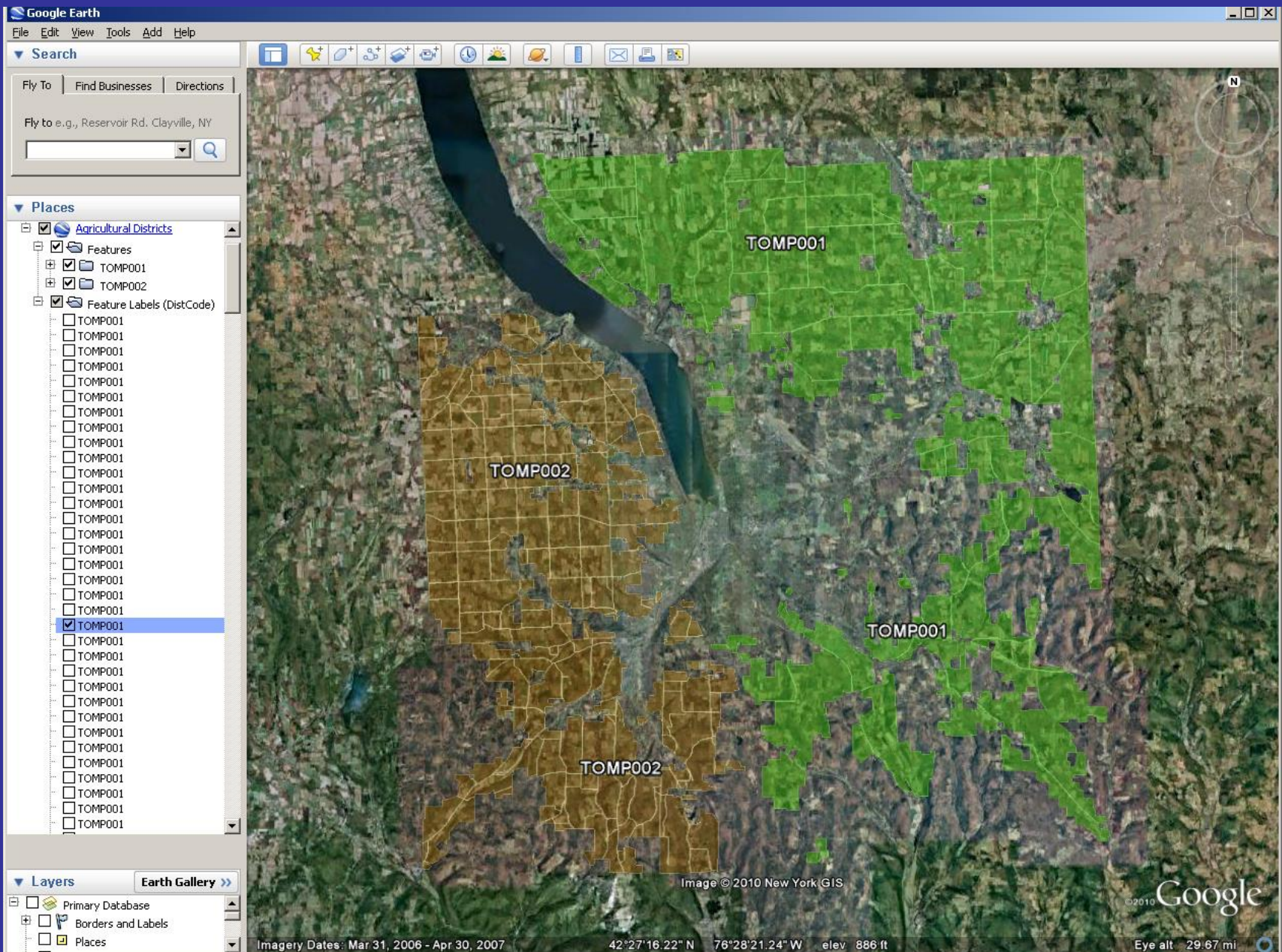
Export to KML 2.5.4



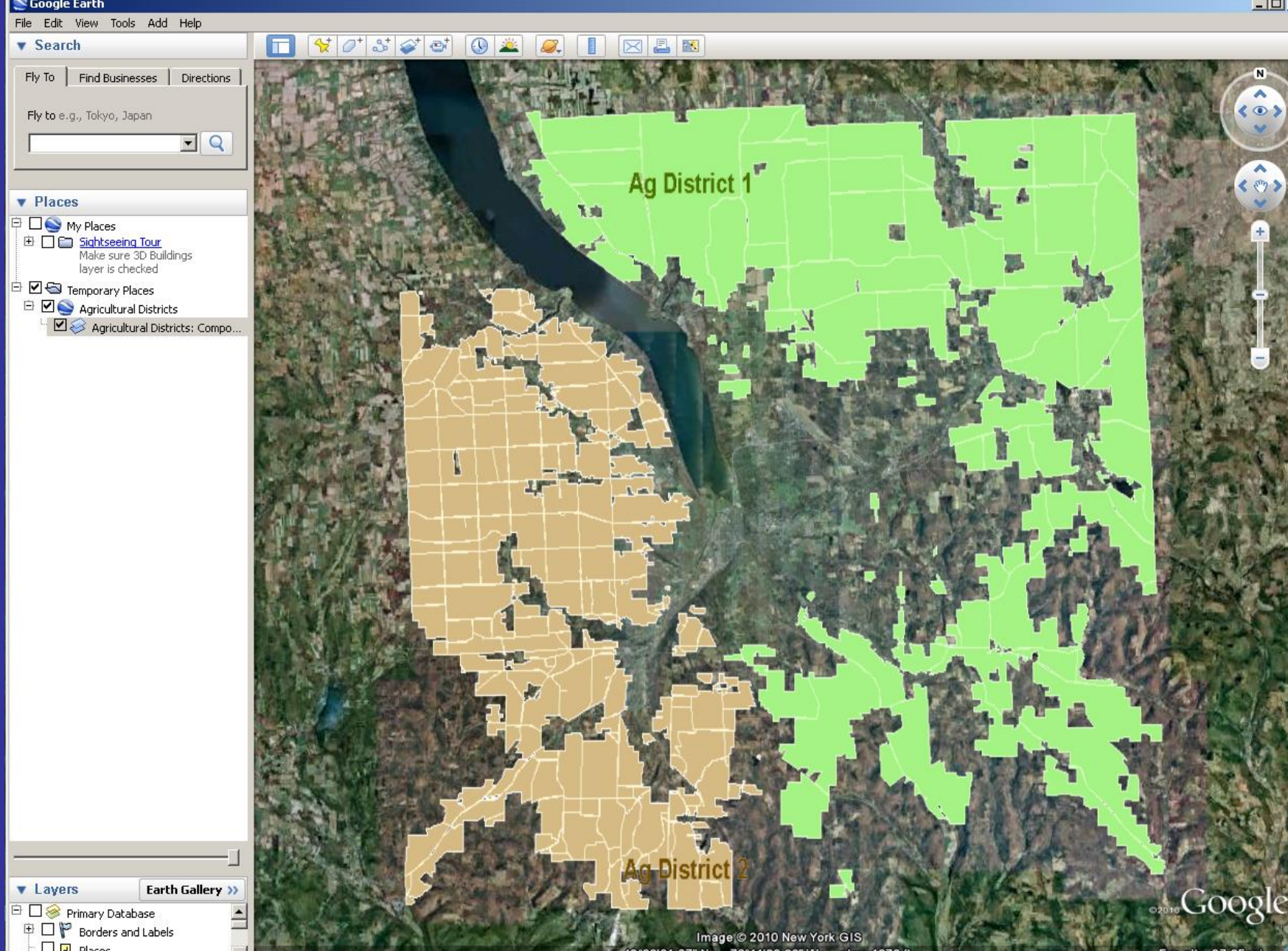
Export to KML 2.5.4



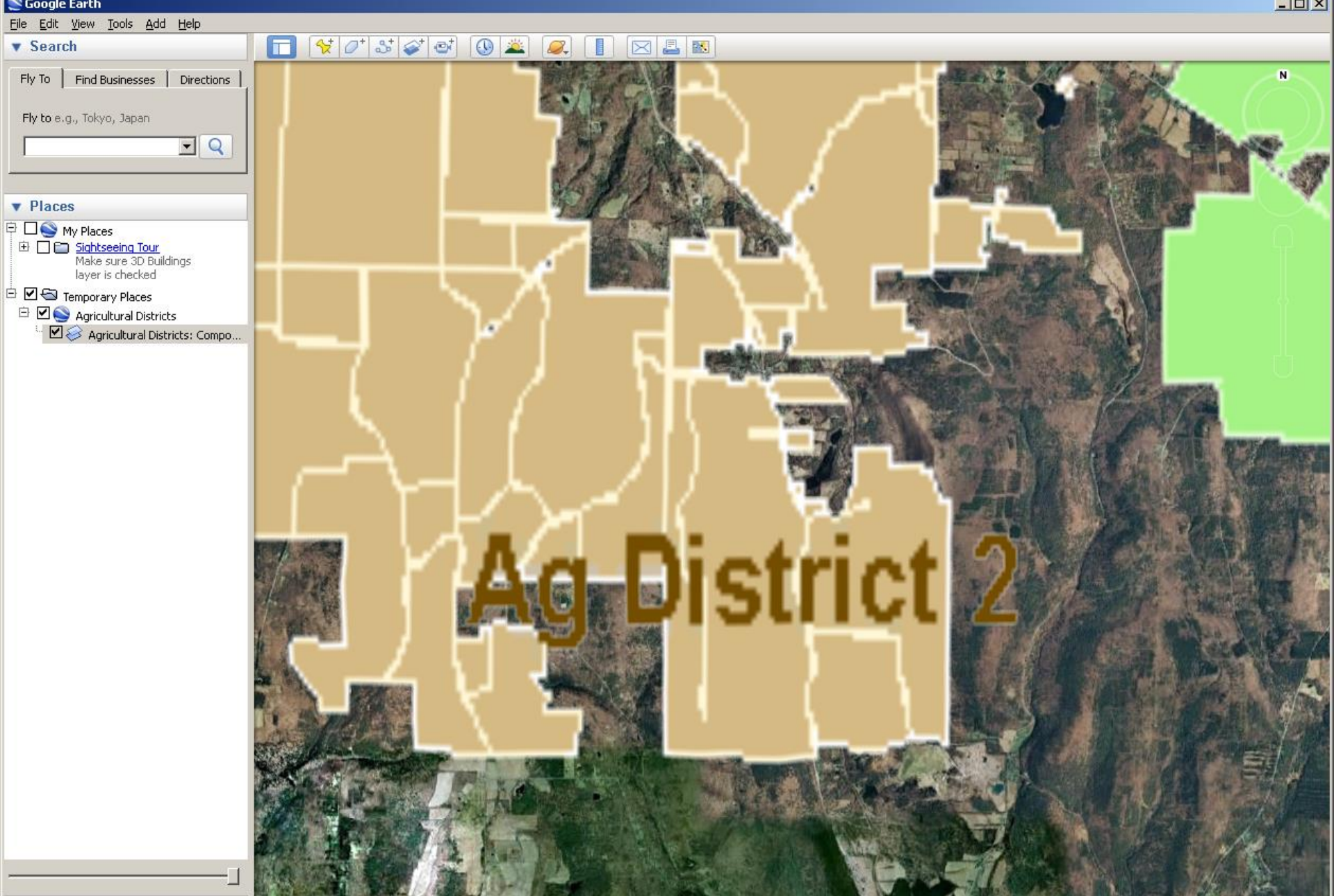
Export to KML 2.5.4



Export to KML 2.5.4

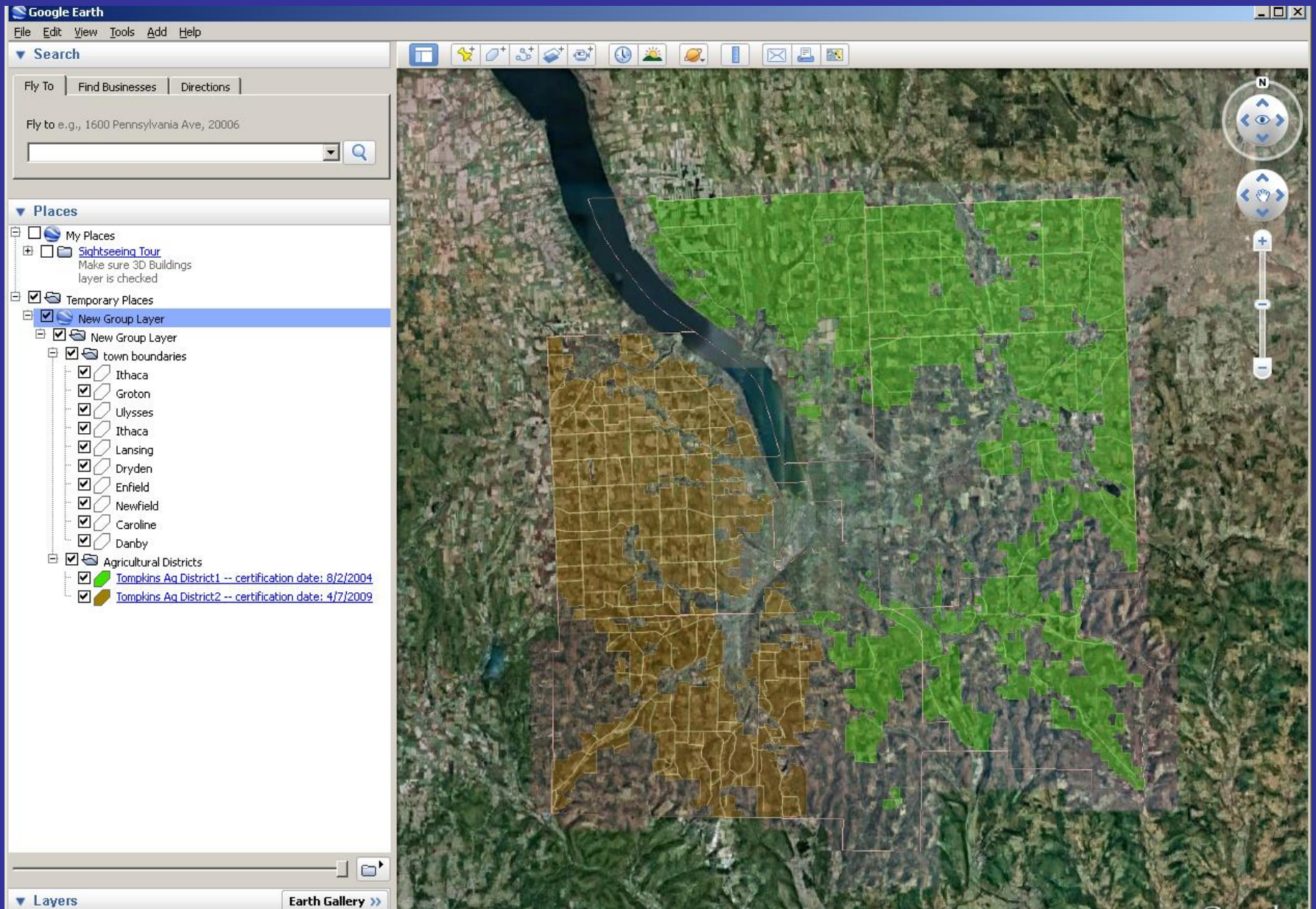


Shape2KML

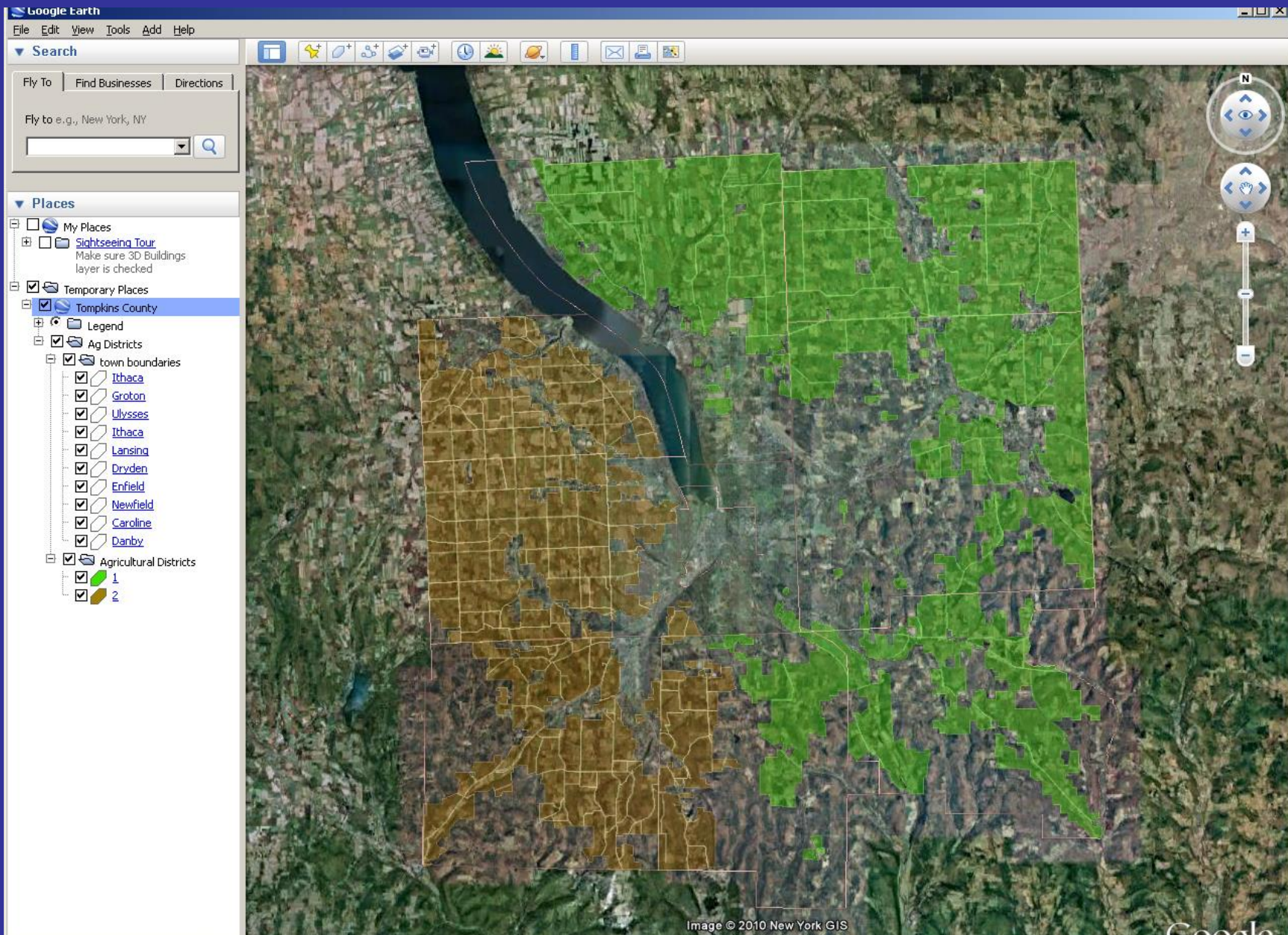


Shape2KML

Multiple Layers



Shape2KML



Shape2KML

Legends

▼ Search

Fly To Find Businesses Directions

Fly to e.g., Hotels near JFK

▼ Places

- My Places
 - Sightseeing Tour
Make sure 3D Buildings layer is checked
- Temporary Places
 - Tompkins County
 - Legend
 - Upper Left
 - Upper Center
 - Upper Right
 - Center Left
 - Center
 - Center Right
 - Lower Left
 - Lower Center
 - Lower Right
 - None
 - town boundaries
 - Ithaca
 - Groton
 - Ulysses
 - Ithaca
 - Lansing
 - Dryden
 - Enfield
 - Newfield
 - Caroline
 - Danby
 - Agricultural Districts
 - 1
 - 2

Legend

- TOMP001
- TOMP002

Shape2KML

Attribute and other
data display

The screenshot shows a GIS interface with a satellite map. A large area of the map is highlighted in bright green, representing agricultural districts. On the left, a 'Places' sidebar is visible, showing a tree view with 'Agricultural Districts' expanded to 'Features' and 'TOMP001'. A pop-up window on the right provides the following information:

County = Tompkins
District = 1
Creation = 4/28/1980
Certified = 8/2/2004
Towns = Caroline, Danby, Dryden, Groton, Ithaca, Lansing
DistCode = TOMP001
DISCLAIMER = NOTE this is a general reference to Ag District boundaries-not a legal substitute for actual tax parcel information. Open Enrollment Annual Additions are not included in this data. Check with county agencies to confirm the status of individual properties

Export to KML 2.5.4

- My Places
 - Sightseeing Tour
 - Make sure 3D Buildings layer is checked
 - Temporary Places
 - New Group Layer
 - New Group Layer
 - town boundaries
 - Ithaca
 - Groton
 - Ulysses
 - Ithaca
 - Lansing
 - Dryden
 - Enfield
 - Newfield
 - Caroline
 - Danby
 - Agricultural Districts
 - Tompkins Aq District1 -- certification date: 8/2/2004**
 - Tompkins Aq District2 -- certification date: 4/7/2009

Tompkins Ag District1 -- certification date: 8/2/2004

| Field Name | Field Value |
|------------|--|
| County | Tompkins |
| District | 1 |
| Creation | 4/28/1980 |
| Certified | 8/2/2004 |
| Towns | Caroline, Danby, Dryden, Groton, Ithaca, Lansing |
| DistCode | TOMP001 |
| DISCLAIMER | NOTE this is a general reference to Ag District boundaries-not a legal substitute for actual tax parcel information. Open Enrollment Annual Additions are not included in this data. Check with county agencies to confirm the status of individual properties |

Shape2KML

▼ Search

Fly To Find Businesses Directions

Fly to e.g., 37.407229, -122.107162



▼ Places

- My Places
 - [Sightseeing Tour](#)
Make sure 3D Buildings layer is checked
- Temporary Places
 - Tompkins County Agricultural D...
 - Tompkins County Agricultural Di
 - town boundaries
 - [Ithaca](#)
 - [Groton](#)
 - [Ulysses](#)
 - [Ithaca](#)
 - [Lansing](#)
 - [Dryden](#)
 - [Enfield](#)
 - [Newfield](#)
 - [Caroline](#)
 - [Danby](#)
 - Agricultural Districts
 - [Aq District1](#)
 - [Aq District2](#)



Export to KML / Shape2KML



Shapefile to KML

What are the
options

You decide