

# 2010 Census Count Review Experience

Presented by: Jan Vink

November 10, 2010 (GISDay)

Program on Applied Demographics



Web: <http://pad.human.cornell.edu>

Email: [PADInfo@Cornell.edu](mailto:PADInfo@Cornell.edu)

# Count Review

- Goal:
  - Help Census Bureau to get everyone counted at the right place
- Who:
  - FSCPE State representatives
- How:
  - Compare state addresses/locations with MAF
    - Housing Units (HU), Group Quarters (GQ)
    - Completeness (HU+GQ)/Accuracy (GQ)

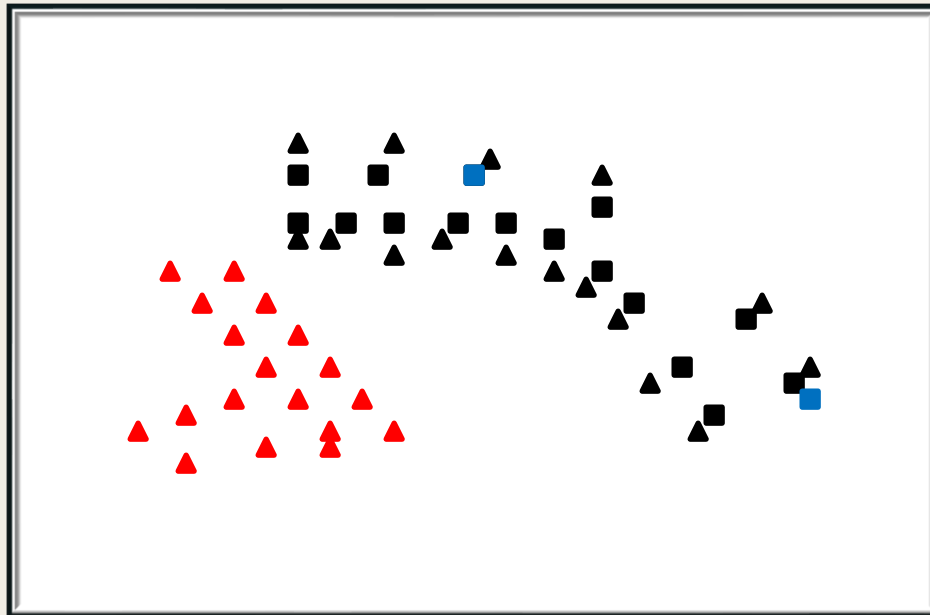


# Housing Units

- State Addresses
  - Based on Real Property data
    - Developed algorithms for #HU/address
  - Collected:
    - 1.5 million addresses – 2 million HU's
    - 36 counties



# HU Review Tool



- Unmatched Census
- Matched Census
- ▲ Matched State
- ▲ Unmatched State



# Group Quarters

- Data collection
  - Mostly by hand
    - Translating address lists, campus maps, etc. into lat/long with help of aerial photography
- Scope limited to most common types
- Data collected:
  - Lat/long for 3,000 GQ's



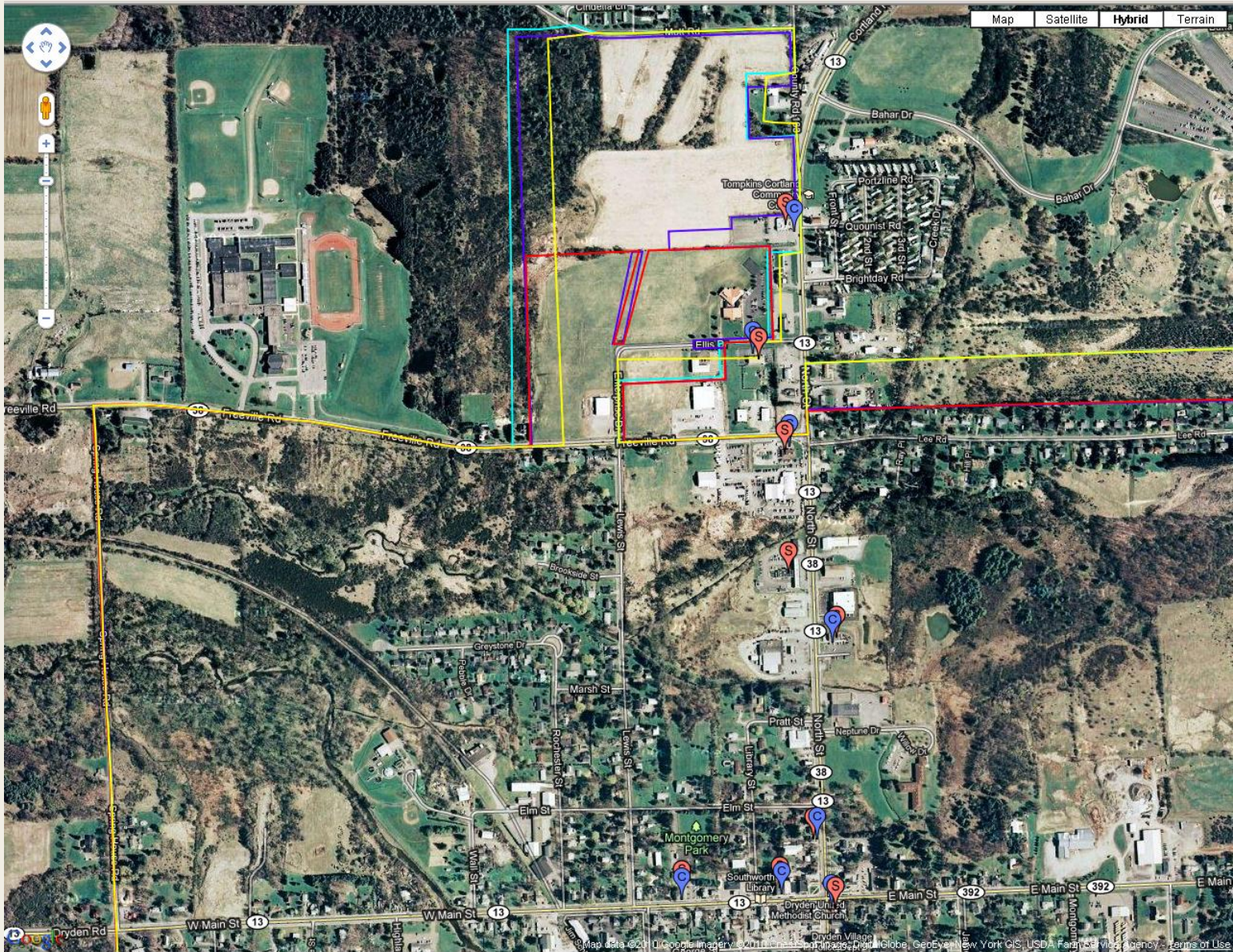
# GQ comparison example

- Dryden restaurants

Source	Name	lat/long
C	A-1 Restaurant	42.501562,-76.298395
S	A1 Restaurant	42.501668, -76.298591
S	Burger King	42.494866, -76.297453
C	Dryden Hotel	42.490546,-76.300921
S	Dryden Hotel	42.490669, -76.300924
C	Dryden Pizzeria	42.490437, -76.297566
S	Dryden Queen Diner	42.497927, -76.298623
C	Dunkin Donuts	42.494795,-76.297547
S	Mc Donalds	42.495929, -76.298526
C	Pizzeria	42.490638,-76.298679
S	Pizzeria	42.490408,-76.297478
C	Queen's Diner	42.498015,-76.298502
C	Song Tao	42.49154,-76.29788
S	Song Tao	42.491546, -76.297968
C	Subway	42.499549,-76.299318
S	Subway	42.499461, -76.299202
S	Todi's Italian Pizzeria	42.490737, -76.298722

[On a map](#)





## Program on Applied Demographics

