

Kids Get Feet Wet with Geospatial Technology

4-H and National Wildlife Refuges

Susan B. Hoskins, Senior Extension Associate
Cornell University, Ithaca, NY

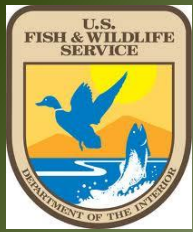
Jim Hooper, Extension Educator
CCE Ontario County, NY

Elliot Patnode, 4-H Youth Leader
4-H Geoseekers, Ontario County, NY



Cornell University
Cooperative Extension





US Fish and Wildlife Service



▶ Since 1979, USDA and DOI have partnered to support programs connecting people with nature

- Wildlife Habitat Evaluation Program
- 4-H Programs of Distinction
- 4-H GIS/GPS Partnership projects
- Assisting kids with their wildlife 4-H projects
- The National 4-H Sport Fishing Program



Montezuma NWR



Target Rock NWR



San Diego Bay NWR

US Fish Wildlife Service Grant

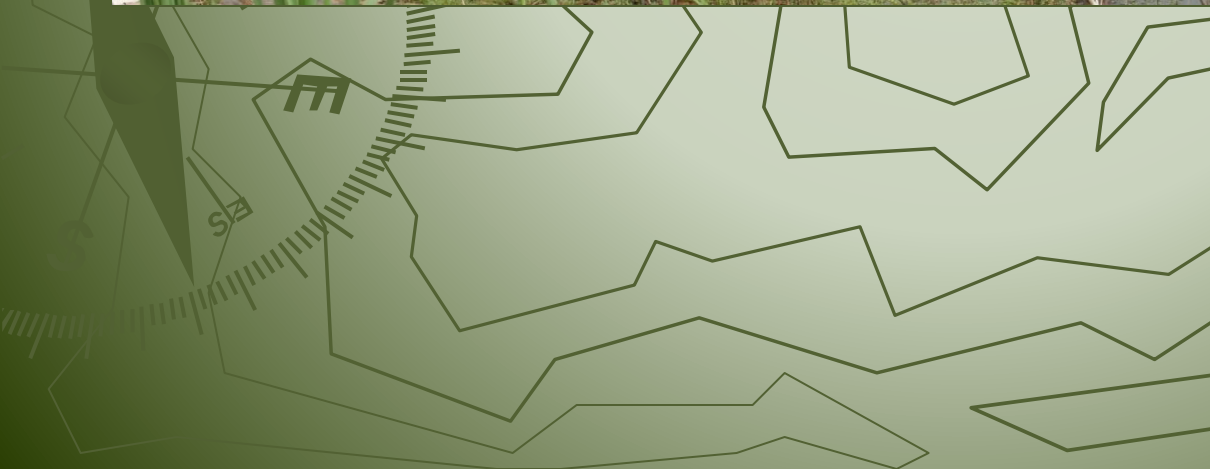
- ▶ Refuge mapping project
- ▶ Trimble Juno units
- ▶ Professional development
- ▶ Educational opportunities

New York



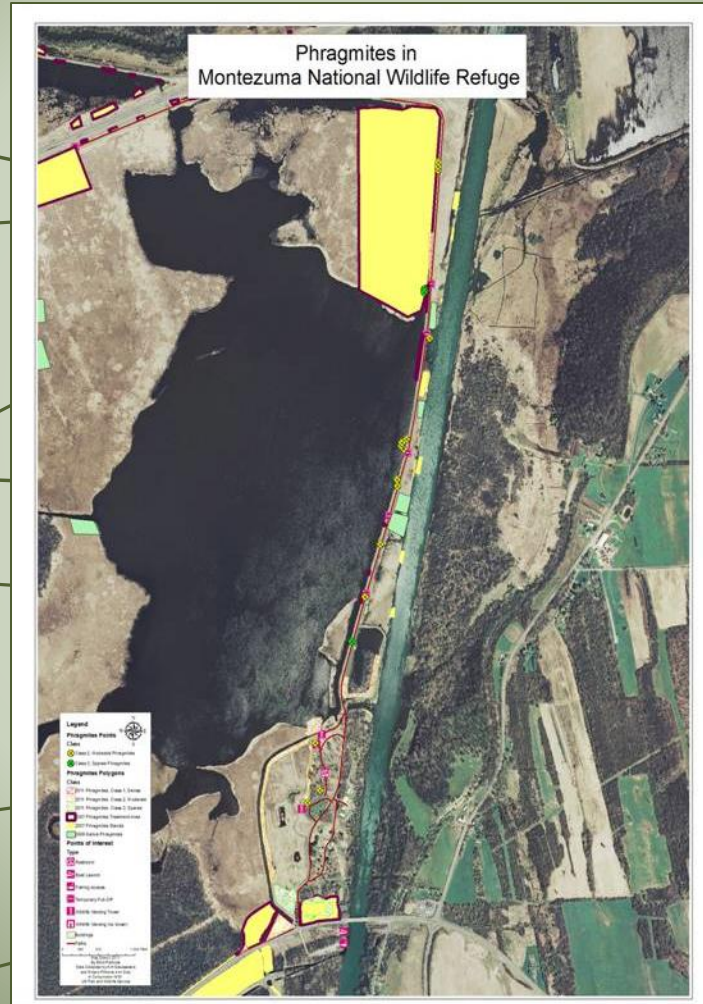
Montezuma NWR







Montezuma NWR Map



Target Rock NWR



Suffolk County, NY 4-H mapping team



Site Orientation



Target Rock

Project planning



Field Work

Sign study



Trail mapping



Data download and review

Target Rock NWR Map

TARGET ROCK NATIONAL WILDLIFE REFUGE TRAIL MAP



MAP CREATED BY SUFFOLK COUNTY 4-H
AUGUST 2011



Lessons Learned

▶ Skill building

- GPS, GIS, remote sensing

▶ Leadership development

- Project planning, community action, stewardship

▶ Project challenges

- Know your GPS
- Pre-mapping orientation
- Follow-up



Millard Fillmore 4-H Club



Photo: Chip Malone



Photo: Chip Malone



Photo: Chip Malone

Fledgling Bald Eagles

Questions?

Thank You

For more information:

Charles (Chip) Malone
4-H Geospatial Sciences Specialist
cwm4@cornell.edu



Cornell University
Cooperative Extension

