

INDEX.

STREETS.

Albany, N.	A	1-20
Aurora, N.	A	21-22
Clinton, N.	C	1-10
Clinton, N.	C	11-20
Clinton, N.	C	21-30
Clinton, N.	C	31-40
Clinton, N.	C	41-50
Clinton, N.	C	51-60
Clinton, N.	C	61-70
Clinton, N.	C	71-80
Clinton, N.	C	81-90
Clinton, N.	C	91-100
Clinton, N.	C	101-110
Clinton, N.	C	111-120
Clinton, N.	C	121-130
Clinton, N.	C	131-140
Clinton, N.	C	141-150
Clinton, N.	C	151-160
Clinton, N.	C	161-170
Clinton, N.	C	171-180
Clinton, N.	C	181-190
Clinton, N.	C	191-200
Clinton, N.	C	201-210
Clinton, N.	C	211-220
Clinton, N.	C	221-230
Clinton, N.	C	231-240
Clinton, N.	C	241-250
Clinton, N.	C	251-260
Clinton, N.	C	261-270
Clinton, N.	C	271-280
Clinton, N.	C	281-290
Clinton, N.	C	291-300
Clinton, N.	C	301-310
Clinton, N.	C	311-320
Clinton, N.	C	321-330
Clinton, N.	C	331-340
Clinton, N.	C	341-350
Clinton, N.	C	351-360
Clinton, N.	C	361-370
Clinton, N.	C	371-380
Clinton, N.	C	381-390
Clinton, N.	C	391-400
Clinton, N.	C	401-410
Clinton, N.	C	411-420
Clinton, N.	C	421-430
Clinton, N.	C	431-440
Clinton, N.	C	441-450
Clinton, N.	C	451-460
Clinton, N.	C	461-470
Clinton, N.	C	471-480
Clinton, N.	C	481-490
Clinton, N.	C	491-500
Clinton, N.	C	501-510
Clinton, N.	C	511-520
Clinton, N.	C	521-530
Clinton, N.	C	531-540
Clinton, N.	C	541-550
Clinton, N.	C	551-560
Clinton, N.	C	561-570
Clinton, N.	C	571-580
Clinton, N.	C	581-590
Clinton, N.	C	591-600
Clinton, N.	C	601-610
Clinton, N.	C	611-620
Clinton, N.	C	621-630
Clinton, N.	C	631-640
Clinton, N.	C	641-650
Clinton, N.	C	651-660
Clinton, N.	C	661-670
Clinton, N.	C	671-680
Clinton, N.	C	681-690
Clinton, N.	C	691-700
Clinton, N.	C	701-710
Clinton, N.	C	711-720
Clinton, N.	C	721-730
Clinton, N.	C	731-740
Clinton, N.	C	741-750
Clinton, N.	C	751-760
Clinton, N.	C	761-770
Clinton, N.	C	771-780
Clinton, N.	C	781-790
Clinton, N.	C	791-800
Clinton, N.	C	801-810
Clinton, N.	C	811-820
Clinton, N.	C	821-830
Clinton, N.	C	831-840
Clinton, N.	C	841-850
Clinton, N.	C	851-860
Clinton, N.	C	861-870
Clinton, N.	C	871-880
Clinton, N.	C	881-890
Clinton, N.	C	891-900
Clinton, N.	C	901-910
Clinton, N.	C	911-920
Clinton, N.	C	921-930
Clinton, N.	C	931-940
Clinton, N.	C	941-950
Clinton, N.	C	951-960
Clinton, N.	C	961-970
Clinton, N.	C	971-980
Clinton, N.	C	981-990
Clinton, N.	C	991-1000

SPECIALS.

Andrus & Church, Printing Office.	A	1-21
Andrus, H. M., Felt's Expanding	A	22-23
Aurora Hotel.	A	24-25
Baker, W. H. & Co., Gun Factory.	B	1-2
Baptist Church.	B	3-4
Barber, J., Boarding Stables.	B	5-6
Bastwick, H., Carriage Shop.	B	7-8
Bay Hotel.	B	9-10
Bennett, J., Tailor.	B	11-12
Best, J., Tailor.	B	13-14
Bowling Green.	B	15-16
Briggs, J., Tailor.	B	17-18
Brook, W. H., Tailor.	B	19-20
Brook, W. H., Tailor.	B	21-22
Brook, W. H., Tailor.	B	23-24
Brook, W. H., Tailor.	B	25-26
Brook, W. H., Tailor.	B	27-28
Brook, W. H., Tailor.	B	29-30
Brook, W. H., Tailor.	B	31-32
Brook, W. H., Tailor.	B	33-34
Brook, W. H., Tailor.	B	35-36
Brook, W. H., Tailor.	B	37-38
Brook, W. H., Tailor.	B	39-40
Brook, W. H., Tailor.	B	41-42
Brook, W. H., Tailor.	B	43-44
Brook, W. H., Tailor.	B	45-46
Brook, W. H., Tailor.	B	47-48
Brook, W. H., Tailor.	B	49-50
Brook, W. H., Tailor.	B	51-52
Brook, W. H., Tailor.	B	53-54
Brook, W. H., Tailor.	B	55-56
Brook, W. H., Tailor.	B	57-58
Brook, W. H., Tailor.	B	59-60
Brook, W. H., Tailor.	B	61-62
Brook, W. H., Tailor.	B	63-64
Brook, W. H., Tailor.	B	65-66
Brook, W. H., Tailor.	B	67-68
Brook, W. H., Tailor.	B	69-70
Brook, W. H., Tailor.	B	71-72
Brook, W. H., Tailor.	B	73-74
Brook, W. H., Tailor.	B	75-76
Brook, W. H., Tailor.	B	77-78
Brook, W. H., Tailor.	B	79-80
Brook, W. H., Tailor.	B	81-82
Brook, W. H., Tailor.	B	83-84
Brook, W. H., Tailor.	B	85-86
Brook, W. H., Tailor.	B	87-88
Brook, W. H., Tailor.	B	89-90
Brook, W. H., Tailor.	B	91-92
Brook, W. H., Tailor.	B	93-94
Brook, W. H., Tailor.	B	95-96
Brook, W. H., Tailor.	B	97-98
Brook, W. H., Tailor.	B	99-100

10 SHEETS.

ITHACA

NEW YORK.

SANBORN MAP & PUBLISHING CO. LIMITED

115 Broadway, New York.

SCALE, 50 FT. TO AN INCH.

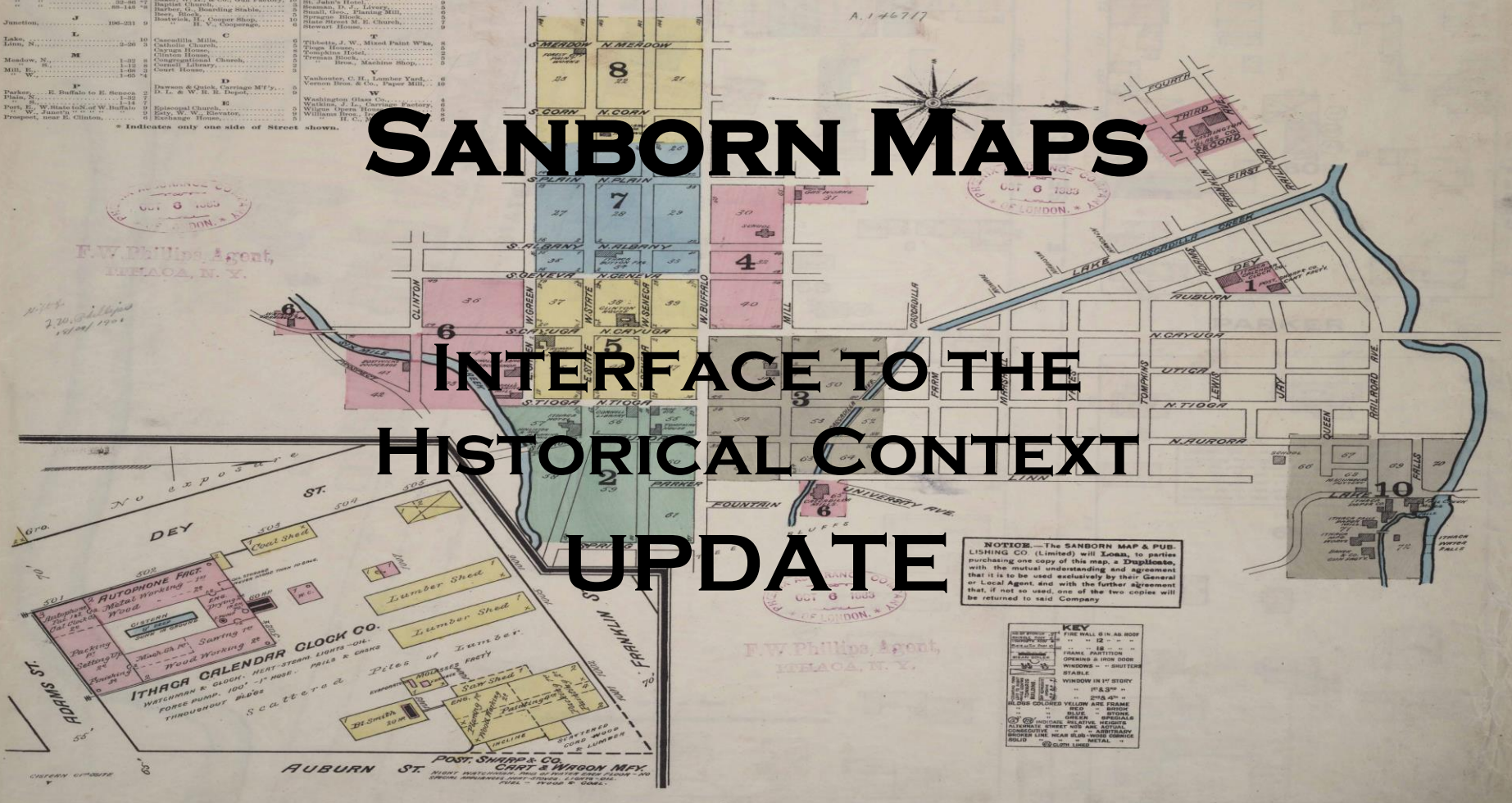
MAY, 1883.

REPORT: Population 10000. Precipitous W. Water Facilities. Reservoir - Cap 1000000 Gal. Elevation 147' Situated within Corporation limits. 3 Large Cisterns on State St. also Canal & Drains. 52 Fire Hydrants. Fire Department - 2 Engines. 3 Steam & 7 Horse Engines. 3 Independent Hose Carts. 5000' Hose. (3000' in Good order). 1 Hook & Ladder Co. 2 Duckhook Fire Extinguishers.

SANBORN MAPS

INTERFACE TO THE HISTORICAL CONTEXT

UPDATE



F.W. Phillips, Agent, ITHACA, N. Y.

F.W. Phillips, Agent, ITHACA, N. Y.

NOTICE.—The SANBORN MAP & PUBLISHING CO. (Limited) will loan, to parties purchasing one copy of this map, a Duplicate, with the mutual understanding and agreement that it is to be used exclusively by their General or Local Agent, and with the further agreement that, if not so used, one of the two copies will be returned to said Company.

KEY

FINE WALL 6 IN. AS BODY	— 12 —
FINE WALL 4 IN. AS BODY	— 13 —
FRAME PARTITION	— 14 —
OPENING A IRON CURTAIN	— 15 —
WINDING — SHUTTER	— 16 —
STAIRS	— 17 —
WOODEN 1/2 STORY	— 18 —
WOODEN 1/2 STORY	— 19 —
WOODEN 1/2 STORY	— 20 —
WOODEN 1/2 STORY	— 21 —
WOODEN 1/2 STORY	— 22 —
WOODEN 1/2 STORY	— 23 —
WOODEN 1/2 STORY	— 24 —
WOODEN 1/2 STORY	— 25 —
WOODEN 1/2 STORY	— 26 —
WOODEN 1/2 STORY	— 27 —
WOODEN 1/2 STORY	— 28 —
WOODEN 1/2 STORY	— 29 —
WOODEN 1/2 STORY	— 30 —
WOODEN 1/2 STORY	— 31 —
WOODEN 1/2 STORY	— 32 —
WOODEN 1/2 STORY	— 33 —
WOODEN 1/2 STORY	— 34 —
WOODEN 1/2 STORY	— 35 —
WOODEN 1/2 STORY	— 36 —
WOODEN 1/2 STORY	— 37 —
WOODEN 1/2 STORY	— 38 —
WOODEN 1/2 STORY	— 39 —
WOODEN 1/2 STORY	— 40 —
WOODEN 1/2 STORY	— 41 —
WOODEN 1/2 STORY	— 42 —
WOODEN 1/2 STORY	— 43 —
WOODEN 1/2 STORY	— 44 —
WOODEN 1/2 STORY	— 45 —
WOODEN 1/2 STORY	— 46 —
WOODEN 1/2 STORY	— 47 —
WOODEN 1/2 STORY	— 48 —
WOODEN 1/2 STORY	— 49 —
WOODEN 1/2 STORY	— 50 —



WHAT ARE SANBORN MAPS?

- **FIRE INSURANCE MAPS DEVELOPED IN THE LATE 19TH CENTURY FOR THE INSURANCE INDUSTRY.**
- **MAPPING PROCEDURES DEVELOPED BY PERRIS AND D.L. SANBORN WHOSE COMPANY REMAINED THE MOST IMPORTANT INSURANCE MAPPING COMPANY, ALTHOUGH THERE WERE OTHERS.**
- **GAVE POLICY WRITERS A THOROUGH UNDERSTANDING OF THE BUILT ENVIRONMENT AND THE ATTENDANT RISKS.**
- **COMPLETED FOR OVER 12,000 CITIES AND TOWNS IN THE US-OVER 700,000 SHEETS.**
- **UPDATED EVERY 6-10 YEARS**

INDEX.

STREETS.	
Adams St.	1-100
Albany St.	1-100
Albany St.	101-200
Albany St.	201-300
Albany St.	301-400
Albany St.	401-500
Albany St.	501-600
Albany St.	601-700
Albany St.	701-800
Albany St.	801-900
Albany St.	901-1000
Albany St.	1001-1100
Albany St.	1101-1200
Albany St.	1201-1300
Albany St.	1301-1400
Albany St.	1401-1500
Albany St.	1501-1600
Albany St.	1601-1700
Albany St.	1701-1800
Albany St.	1801-1900
Albany St.	1901-2000
Albany St.	2001-2100
Albany St.	2101-2200
Albany St.	2201-2300
Albany St.	2301-2400
Albany St.	2401-2500
Albany St.	2501-2600
Albany St.	2601-2700
Albany St.	2701-2800
Albany St.	2801-2900
Albany St.	2901-3000
Albany St.	3001-3100
Albany St.	3101-3200
Albany St.	3201-3300
Albany St.	3301-3400
Albany St.	3401-3500
Albany St.	3501-3600
Albany St.	3601-3700
Albany St.	3701-3800
Albany St.	3801-3900
Albany St.	3901-4000
Albany St.	4001-4100
Albany St.	4101-4200
Albany St.	4201-4300
Albany St.	4301-4400
Albany St.	4401-4500
Albany St.	4501-4600
Albany St.	4601-4700
Albany St.	4701-4800
Albany St.	4801-4900
Albany St.	4901-5000
Albany St.	5001-5100
Albany St.	5101-5200
Albany St.	5201-5300
Albany St.	5301-5400
Albany St.	5401-5500
Albany St.	5501-5600
Albany St.	5601-5700
Albany St.	5701-5800
Albany St.	5801-5900
Albany St.	5901-6000
Albany St.	6001-6100
Albany St.	6101-6200
Albany St.	6201-6300
Albany St.	6301-6400
Albany St.	6401-6500
Albany St.	6501-6600
Albany St.	6601-6700
Albany St.	6701-6800
Albany St.	6801-6900
Albany St.	6901-7000
Albany St.	7001-7100
Albany St.	7101-7200
Albany St.	7201-7300
Albany St.	7301-7400
Albany St.	7401-7500
Albany St.	7501-7600
Albany St.	7601-7700
Albany St.	7701-7800
Albany St.	7801-7900
Albany St.	7901-8000
Albany St.	8001-8100
Albany St.	8101-8200
Albany St.	8201-8300
Albany St.	8301-8400
Albany St.	8401-8500
Albany St.	8501-8600
Albany St.	8601-8700
Albany St.	8701-8800
Albany St.	8801-8900
Albany St.	8901-9000
Albany St.	9001-9100
Albany St.	9101-9200
Albany St.	9201-9300
Albany St.	9301-9400
Albany St.	9401-9500
Albany St.	9501-9600
Albany St.	9601-9700
Albany St.	9701-9800
Albany St.	9801-9900
Albany St.	9901-10000

SPECIALS.

Albany St.	1-100
Albany St.	101-200
Albany St.	201-300
Albany St.	301-400
Albany St.	401-500
Albany St.	501-600
Albany St.	601-700
Albany St.	701-800
Albany St.	801-900
Albany St.	901-1000
Albany St.	1001-1100
Albany St.	1101-1200
Albany St.	1201-1300
Albany St.	1301-1400
Albany St.	1401-1500
Albany St.	1501-1600
Albany St.	1601-1700
Albany St.	1701-1800
Albany St.	1801-1900
Albany St.	1901-2000
Albany St.	2001-2100
Albany St.	2101-2200
Albany St.	2201-2300
Albany St.	2301-2400
Albany St.	2401-2500
Albany St.	2501-2600
Albany St.	2601-2700
Albany St.	2701-2800
Albany St.	2801-2900
Albany St.	2901-3000
Albany St.	3001-3100
Albany St.	3101-3200
Albany St.	3201-3300
Albany St.	3301-3400
Albany St.	3401-3500
Albany St.	3501-3600
Albany St.	3601-3700
Albany St.	3701-3800
Albany St.	3801-3900
Albany St.	3901-4000
Albany St.	4001-4100
Albany St.	4101-4200
Albany St.	4201-4300
Albany St.	4301-4400
Albany St.	4401-4500
Albany St.	4501-4600
Albany St.	4601-4700
Albany St.	4701-4800
Albany St.	4801-4900
Albany St.	4901-5000
Albany St.	5001-5100
Albany St.	5101-5200
Albany St.	5201-5300
Albany St.	5301-5400
Albany St.	5401-5500
Albany St.	5501-5600
Albany St.	5601-5700
Albany St.	5701-5800
Albany St.	5801-5900
Albany St.	5901-6000
Albany St.	6001-6100
Albany St.	6101-6200
Albany St.	6201-6300
Albany St.	6301-6400
Albany St.	6401-6500
Albany St.	6501-6600
Albany St.	6601-6700
Albany St.	6701-6800
Albany St.	6801-6900
Albany St.	6901-7000
Albany St.	7001-7100
Albany St.	7101-7200
Albany St.	7201-7300
Albany St.	7301-7400
Albany St.	7401-7500
Albany St.	7501-7600
Albany St.	7601-7700
Albany St.	7701-7800
Albany St.	7801-7900
Albany St.	7901-8000
Albany St.	8001-8100
Albany St.	8101-8200
Albany St.	8201-8300
Albany St.	8301-8400
Albany St.	8401-8500
Albany St.	8501-8600
Albany St.	8601-8700
Albany St.	8701-8800
Albany St.	8801-8900
Albany St.	8901-9000
Albany St.	9001-9100
Albany St.	9101-9200
Albany St.	9201-9300
Albany St.	9301-9400
Albany St.	9401-9500
Albany St.	9501-9600
Albany St.	9601-9700
Albany St.	9701-9800
Albany St.	9801-9900
Albany St.	9901-10000

F.W. Phillips Agent
ITHACA, N. Y.

DEY ST
FRANKLIN ST
AUBURN ST

ITHACA CALENDAR CLOCK CO.
Post, Swapp & Co.
CART & WAGON MFG.

ITHACA

NEW YORK
SANBORN MAP & PUBLISHING CO.
LIMITED
115 Broadway, New York.
SCALE, 50 FT. TO AN INCH.
MAY, 1883.

REPORT: Population 10000. First Water, W. Water Facilities. Reservoir - Cap. 1000000 Gal. Station 197. Streets within corporation limits. 2 Large Churches on State St. also Canal & Creeks. 30 Fire Hydrants. Fire Department. Volunteer. 3 Steam & 1 Hand Engines. 1 Independent Fire Co. 1000' in Road (over). 1 Hook & Ladder Co. 2 Hook & Ladder Co. 2 Hook & Ladder Co.

NOTICE - The SANBORN MAP & PUBLISHING CO. (limited) will issue, to parties purchasing one copy of this map, a Duplicate, with the mutual understanding and agreement that it is to be used exclusively by them. Consent of Local Agent, and with the further agreement that, if not so used, one of the two copies will be returned to said Company.

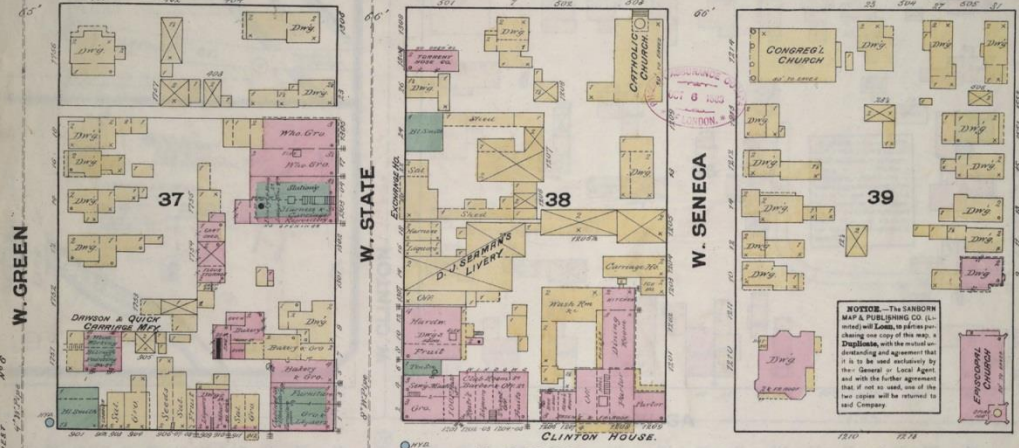
KEY	
1	WATER IN IT STREET
2	WATER IN IT STREET
3	WATER IN IT STREET
4	WATER IN IT STREET
5	WATER IN IT STREET
6	WATER IN IT STREET
7	WATER IN IT STREET
8	WATER IN IT STREET
9	WATER IN IT STREET
10	WATER IN IT STREET
11	WATER IN IT STREET
12	WATER IN IT STREET
13	WATER IN IT STREET
14	WATER IN IT STREET
15	WATER IN IT STREET
16	WATER IN IT STREET
17	WATER IN IT STREET
18	WATER IN IT STREET
19	WATER IN IT STREET
20	WATER IN IT STREET
21	WATER IN IT STREET
22	WATER IN IT STREET
23	WATER IN IT STREET
24	WATER IN IT STREET
25	WATER IN IT STREET
26	WATER IN IT STREET
27	WATER IN IT STREET
28	WATER IN IT STREET
29	WATER IN IT STREET
30	WATER IN IT STREET
31	WATER IN IT STREET
32	WATER IN IT STREET
33	WATER IN IT STREET
34	WATER IN IT STREET
35	WATER IN IT STREET
36	WATER IN IT STREET
37	WATER IN IT STREET
38	WATER IN IT STREET
39	WATER IN IT STREET
40	WATER IN IT STREET
41	WATER IN IT STREET
42	WATER IN IT STREET
43	WATER IN IT STREET
44	WATER IN IT STREET
45	WATER IN IT STREET
46	WATER IN IT STREET
47	WATER IN IT STREET
48	WATER IN IT STREET
49	WATER IN IT STREET
50	WATER IN IT STREET
51	WATER IN IT STREET
52	WATER IN IT STREET
53	WATER IN IT STREET
54	WATER IN IT STREET
55	WATER IN IT STREET
56	WATER IN IT STREET
57	WATER IN IT STREET
58	WATER IN IT STREET
59	WATER IN IT STREET
60	WATER IN IT STREET
61	WATER IN IT STREET
62	WATER IN IT STREET
63	WATER IN IT STREET
64	WATER IN IT STREET
65	WATER IN IT STREET
66	WATER IN IT STREET
67	WATER IN IT STREET
68	WATER IN IT STREET
69	WATER IN IT STREET
70	WATER IN IT STREET
71	WATER IN IT STREET
72	WATER IN IT STREET
73	WATER IN IT STREET
74	WATER IN IT STREET
75	WATER IN IT STREET
76	WATER IN IT STREET
77	WATER IN IT STREET
78	WATER IN IT STREET
79	WATER IN IT STREET
80	WATER IN IT STREET
81	WATER IN IT STREET
82	WATER IN IT STREET
83	WATER IN IT STREET
84	WATER IN IT STREET
85	WATER IN IT STREET
86	WATER IN IT STREET
87	WATER IN IT STREET
88	WATER IN IT STREET
89	WATER IN IT STREET
90	WATER IN IT STREET
91	WATER IN IT STREET
92	WATER IN IT STREET
93	WATER IN IT STREET
94	WATER IN IT STREET
95	WATER IN IT STREET
96	WATER IN IT STREET
97	WATER IN IT STREET
98	WATER IN IT STREET
99	WATER IN IT STREET
100	WATER IN IT STREET

F.W. Phillips Agent
ITHACA, N. Y.

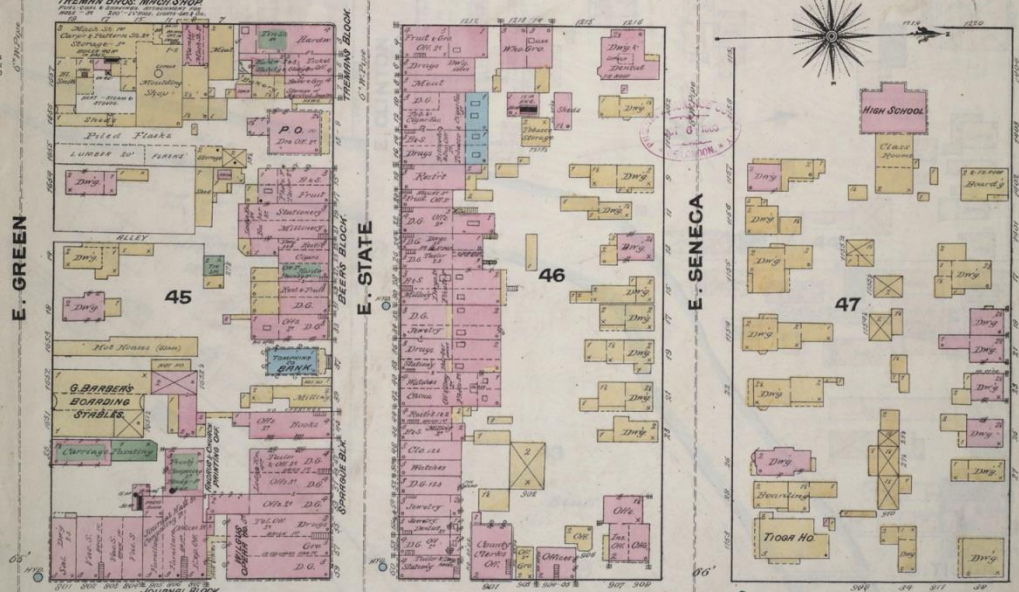
S. GENEVA

N. GENEVA

MAY 1883
ITHACA
NY.



S. CAYUGA N. CAYUGA



S. TIOGA N. TIOGA

Scale of Feet.

WHY ARE THEY VALUABLE NOW?

- **LARGE SCALE (1"=50')**
CAPTURED DETAILED BUILDING FOOTPRINTS
- **ANNOTATIONS ADDED MORE INFORMATION**
- **THEIR STANDARDIZED SYMBOLOGY AND PRODUCTION VALUES—INCLUDING COLOR-CODING FOR BUILDING MATERIALS—MAKES THEM EASY TO USE.**
- **THEY CAPTURE A SNAPSHOT OF EACH CITY AND TOWN EVERY TEN YEARS FROM 1880-1920**

KEY

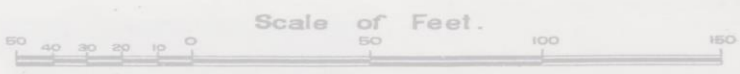
TILE 1ST	Fire proof construction. (OR FIRE RESISTIVE CONSTN)	MANSARD ROOF	Window opening in first story.
BRICK 1ST	Adobe building.	DOTS REPRESENT OPENINGS, STEMS INDICATE STORIES, COUNTING FROM LEFT TO RIGHT, LOOKING TOWARD BUILDING.	Window openings in second and third stories.
TRIPPLE 1ST	Stone building.		Window openings in second and fourth stories.
ADDRE	Concrete, lime, cinder or cement brick		Windows with wired glass.
HEIGHT OF BUILDING IN FEET FROM GROUND TO ROOF LINE	Hollow concrete or cement block constn		Windows with iron or tin clad shutters.
(C. BR.)	Concrete or reinforced concrete constn		Window openings tenth to twenty-second stories.
(C. B.)	Tile building.		
(CONC)	Brick building with frame cornice.		
(TILE)	" " " stone front.		
NUMBER OF STORIES	" " " frame side.		
TWO STORIES AND HEIGHT	" " " frame partition.		
CONSTRUCTION	Brick veneered building		
SHINGLE ROOF	" " and frame building.		
(VEND)	Frame building, brick lined.		
BRICK 1ST	" " metal clad.		
FRAME, BRICK LINED	Frame building.		
F-FLAT S-STORY	Iron building.		
D-DWELLING	Tenant building occupied by various manufacturing or occupancies		
AN-B AUTO IN BENT	Frame building covered with asbestos		
(ASB. CL.)	Brick building with brick or metal cornice.		
NON COMBUSTIBLE ROOF COVERING OF METAL, SLATE, TILE OR ASBESTOS SHINGLES	Fire wall 6 inches above roof.		
SKYLIGHT LIGHTING TOP STORY ONLY	" " 12 " " "		
SKYLIGHT LIGHTING THREE STORIES	" " 18 " " "		
WIRE GLASS SKYLIGHT	" " 36 " " "		
FIRE WALL 48 INCHES ABOVE ROOF	Figures 8, 12, 16 indicate thickness of wall in inches.		
	Wall without opening and size in inches.		
	Wall with openings on floors as designated.		
	Opening with single iron or tin clad door.		
	" " double iron " " doors.		
	" " standard fire doors.		
	Openings with wired glass doors.		
WATER TANK	Drive or passage way.		
BRICK TIE	Stable.		
	Auto. House or private garage.		
(C. B.)	Solid brick with interior walls of C. B. or C. B. and brick mixed.		
(C. B. & BR.)	Mixed construction of C. B. and brick with one wall of solid brick.		
(C. B. & BR. CONSTN)	Mixed construction of C. B. and brick with one wall faced with 4" brick.		
(C. B. & BR. CONSTN) (BR FACED)	Mixed construction of C. B. and brick throughout.		
(C. B. & BR. CONSTN)			

(E)	Open elevator.	(15)	Ground elevation.
(FE)	Frame enclosed elevator.	(V.P.)	Vertical steam boiler.
(ET)	" " " with traps.	(G.O.)	Gasoline tank.
(ESC)	" " " self closing traps.	(O.U.)	Open under.
(CBET)	Concrete block enclosed elevator with traps.	(S.F.C.)	Siamese fire dept. connection
(TESC)	Tile enclosed elevator with self closing traps.	(S.C.C.)	Single fire dept. connection
(BE)	Brick enclosed elev. with wired glass door.	(24)	Reference to adjoining page.
		(+)	Fire engine house, as shown on key map.
		(P)	Fire pump.
		(36)	Under page number refers to corresponding page of previous edition.
		(H.P.F.S.)	"High Pressure Fire Service."
		(FA)	Fire alarm box of the "High Pressure Fire Service"
		(H.P.F.S. 20" W.P.)	Water pipes of the High Pressure Fire Service
		(H.P.F.S. 12" W.P.)	" " and hydrants of the "High Pressure Fire Service" as shown on key map.
		(6" W.P.)	Water pipes and size in inches.
		(6" W.P. PRIVATE)	Water pipes of private supply
		(H.N.)	House numbers shown nearest to buildings are official or actually up on buildings.
		(O.H.N.)	Old house numbers shown furthest from buildings.

PROJECT PROPOSAL: PHASE I

NOTICE.—The SANBORN MAP & PUBLISHING CO. (Limited) will Loan, to parties purchasing one copy of this map, a Duplicate (the mutual understanding being that it is to be used for General or local reference only) and with the further agreement that if not so used, one of the two copies will be returned to said Company.

- LOCATE AS MANY LOCAL MAPS AS POSSIBLE.
- FILL IN THE MISSING MAPS FROM THE COLLECTION AT THE LIBRARY OF CONGRESS
- ARRANGE TO HAVE ALL THE MAPS DIGITIZED AT AN ARCHIVAL STANDARD.
- STORE IN A SAFE DIGITAL REPOSITORY WITH APPROPRIATE METADATA
- PROVIDE A USER-FRIENDLY SITE WITH GEOGRAPHICAL INDEXES FOR USING THE MAPS ONLINE OR DOWNLOADING.



CURRENT INVENTORY OF LOCALLY AVAILABLE MAPS

LOC Checklist	Add'l Maps	Sheets	Held at
Trumansburg, NY			
Apr 1887		2	Ulysses HS
Dec 1893		3	Ulysses HS
May 1898		4	
Dec 1905		5	Ulysses HS
Dec 1910		8	
Sep 1929		8	
Sep 1929 - Dec 1950		8	Ulysses HS
Ithaca, NY			
	1883	10	Cornell RMC
Jul 1888		14	Cornell RMC, TCPL
Dec 1893		26	Cornell RMC
Jun 1898		31	Cornell RMC
Feb 1904		34	Cornell RMC; Cornell Maps
Apr 1910		38	Cornell RMC Ithaca CP HistC
Sep 1919		35	Ithaca CP
Nov 1929		45	Ithaca CP
Nov 1929 - Mar 1961		47	Ithaca CP
Engineering Maps	1899	40	Ithaca CP

No original maps have been found for Dryden or Groton

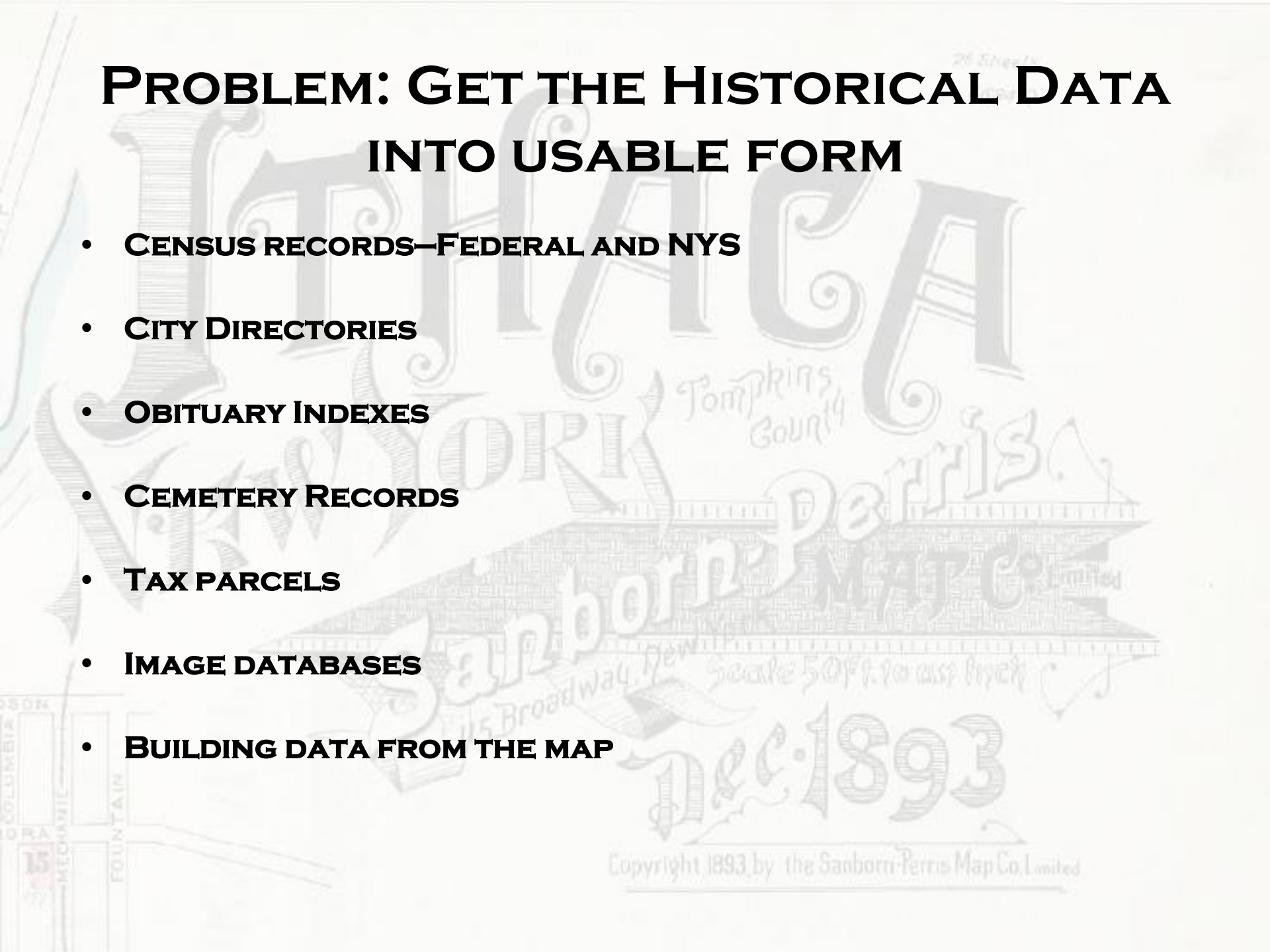
PROJECT PROPOSAL PHASE II: THE MAP AS INFORMATION PORTAL

USE THE BUILDINGS AS LINKS TO OTHER SOURCES OF INFORMATION

- **THE BUILDING ITSELF:**
 - Structural characteristics from the map
 - Historical photographs of the property
- **THE PARCEL:**
 - Available from later Sanborns; Crandall's map; City and County Tax maps
- **LAND USE:**
 - Business directories
- **THE OWNER /RENTER:**
 - City Directories
 - Census Records
 - Obituary Indexes/obituaries

PROBLEM: GET THE HISTORICAL DATA INTO USABLE FORM

- **CENSUS RECORDS—FEDERAL AND NYS**
- **CITY DIRECTORIES**
- **OBITUARY INDEXES**
- **CEMETERY RECORDS**
- **TAX PARCELS**
- **IMAGE DATABASES**
- **BUILDING DATA FROM THE MAP**



TWELFTH CENSUS OF THE UNITED STATES.

SCHEDULE No. 1.—POPULATION.

State New York
County Tompkins

Supervisor's District No. 15
Enumeration District No. 152
Sheet 3

Township or other division of county 3d District Ithaca City
Name of incorporated city, town, or village, within the above-named division, Ithaca City
Enumerated by me on the 2d day of June, 1900, Eugene P. Kingsray Enumerator.

Table with columns: LOCATION, NAME, RELATION, PERSONAL DESCRIPTION, NATIVITY, CITIZENSHIP, OCCUPATION, TRADE, OR PROFESSION, EDUCATION, MEMBERSHIP. Includes entries for Gibbs Lorina R., Carl M., Helen L., Fletcher William H., Lavinia J., David A., Loran Julia M., Harris Emma, Leonard Thomas, Emma J., Lora V., Mark W., Benjamin Ella, Clifford, Jordan Ed, Charles, Adelaide, Reed Robert, Emma, Lora M.

Enumeration of the Inhabitants of Block No. 1 Election District No. 1 Ward No. 3 City or Village Buffalo

Town Schoharie Assembly District No. 1 County Columbia State of New York, June 1, 1915.

Name of Institution St. 50 Enumerator Sam C. Williams

PERMANENT RESIDENCE	NAME	RELATION	COLOR, SEX AND AGE	NATIVITY	CITIZENSHIP	OCCUPATION	POPULATION OF DISTRICT AS OF JUNE 1, 1915	
							Male	Female
1	2	3	4	5	6	7	8	9
1	M. Buffalo	302	Widow, Lucy H.	Wife	W. F. 59	U. S.		
2		304	Carlson, Mary O.	Wife	F. 52	"		
3		304	"	Daughter	F. 17	"		
4		304	"	Daughter	F. 15	"		
5		304	Wasson, Mary	Wife	F. 40	"		
6		310	Wasson, Belle	Wife	F. 38	"		
7		310	E. Cla. Grinnell	Head	M. 39	"		
8		309	Crawford, J. R.	Head	M. 29	"		
9		309	"	Wife	F. 26	"		
10		309	"	Daughter	F. 21	"		
11		309	"	Son	M. 20	"		
12		209	"	Daughter	F. 12	"		
13		311	Bosch, Charles	Head	M. 30	"		
14		311	"	Wife	F. 25	"		
15		311	Thompson, Edna W.	Wife	F. 25	"		
16		319	Wills, Mary	Sister	F. 70	"		
17		319	"	Daughter	F. 65	"		
18		321	Norton, Elmer	Head	M. 57	"		
19		321	"	Wife	F. 57	"		
20		321	"	Daughter	F. 19	"		
21		320	Swain, Katherine	Wife	F. 37	"		
22		320	W. Mahon, Aracenia	Wife	F. 37	"		
23		320	"	Daughter	F. 27	"		
24		320	"	Daughter	F. 25	"		
25		320	"	Daughter	F. 23	"		
26		220	Opavich, Rose	Wife	F. 20	"		
27		223	Leonard, A. S.	Head	M. 68	"		
28		323	"	Wife	F. 63	"		
29		323	"	Daughter	F. 38	"		
30		325	W. Mahon, Frank L.	Head	M. 52	"		
31		325	"	Wife	F. 38	"		
32		325	"	Daughter	F. 37	"		
33		325	"	Daughter	F. 28	"		
34		325	"	Daughter	F. 26	"		
35		325	"	Daughter	F. 21	"		
36		325	"	Daughter	F. 19	"		
37		325	"	Daughter	F. 17	"		
38		325	"	Daughter	F. 15	"		
39		406	Crawford, Chas. W.	Head	M. 63	"		
40		406	"	Wife	F. 55	"		
41		417	Haradorn, C. C.	Head	M. 49	"		
42		417	"	Wife	F. 45	"		
43		409	Harold, W. C.	Head	M. 37	"		
44		409	"	Wife	F. 37	"		
45		409	"	Son	M. 3	"		
46		409	"	Son	M. 1	"		
47		409	"	Son	M. 7	"		
48		409	"	Son	M. 5	"		
49		411	Johnson, Jennie	Wife	F. 73	"		
50		412	Chadwick, James	Head	M. 75	"		

Enumeration of the Inhabitants of Block No. 1 Election District No. 1 Ward No. 3 City or Village Buffalo

Town Schoharie Assembly District No. 1 County Columbia State of New York, June 1, 1915.

Name of Institution St. 50 Enumerator Sam C. Williams

PERMANENT RESIDENCE	NAME	RELATION	COLOR, SEX AND AGE	NATIVITY	CITIZENSHIP	OCCUPATION	POPULATION OF DISTRICT AS OF JUNE 1, 1915	
							Male	Female
1	2	3	4	5	6	7	8	9
1	W. Buffalo	413	Chadwick, Minnie	Wife	F. 77	U. S.		
2		413	Mahony, Fanny	Wife	F. 79	"		
3		413	Shuckman, Anna	Wife	F. 47	"		
4		413	"	Daughter	F. 17	"		
5		413	"	Daughter	F. 15	"		
6		413	"	Daughter	F. 10	"		
7		413	"	Daughter	F. 8	"		
8		415	Barry, Patrick	Head	M. 68	U. S.		
9		415	"	Wife	F. 70	"		
10		415	"	Daughter	F. 32	"		
11		421	Hollam, T. R.	Head	M. 32	U. S.		
12		421	"	Wife	F. 36	"		
13		421	"	Son	M. 7	"		
14		419	Hollam, Jane R.	Head	M. 42	"		
15		419	"	Wife	F. 28	"		
16		419	"	Son	M. 17	"		
17		419	"	Daughter	F. 11	"		
18		419	"	Daughter	F. 9	"		
19		419	"	Daughter	F. 7	"		
20		419	"	Daughter	F. 4	"		
21		419	"	Daughter	F. 4	"		
22		423	Conard, Amy	Wife	F. 42	"		
23		423	"	Wife	F. 42	"		
24		423	"	Son	M. 23	"		
25		423	"	Son	M. 21	"		
26		423	"	Daughter	F. 15	"		
27		423	"	Daughter	F. 13	"		
28		423	"	Daughter	F. 11	"		
29		423	"	Daughter	F. 9	"		
30		423	"	Daughter	F. 7	"		
31		423	"	Daughter	F. 5	"		
32		423	"	Daughter	F. 3	"		
33		423	"	Daughter	F. 1	"		
34		423	"	Daughter	F. 1	"		
35		423	"	Daughter	F. 1	"		
36		423	"	Daughter	F. 1	"		
37		423	"	Daughter	F. 1	"		
38		423	"	Daughter	F. 1	"		
39		423	"	Daughter	F. 1	"		
40		423	"	Daughter	F. 1	"		
41		423	"	Daughter	F. 1	"		
42		423	"	Daughter	F. 1	"		
43		423	"	Daughter	F. 1	"		
44		423	"	Daughter	F. 1	"		
45		423	"	Daughter	F. 1	"		
46		423	"	Daughter	F. 1	"		
47		423	"	Daughter	F. 1	"		
48		423	"	Daughter	F. 1	"		
49		423	"	Daughter	F. 1	"		
50		423	"	Daughter	F. 1	"		

DIRECTORIES: ITHACA 1894

REED & MONTGOMERY, Bookbinders and Blank

You can buy the Latest Styles of **CLOTHING** at **PERRY & CO'S.**

Clearman Jennie C. Mrs., 23 E Buffalo

Cleary Daniel, 144 W State

Cleary Martin M., brakeman, h 42 Wheat

Cleary Mary Mrs., h 49 Hazen

Cleary Matthew, wines and liquors, 160 W State, h 144 do

Cleary Michael P., clerk 16 S Cayuga, bds 88 N Geneva

Cleary Susan, domestic, 41 W Green

Cleary Thomas, peanut vender, h r 140 W Green

Clifford Katie, domestic, 11 Central ave

Cline Maggie, domestic, Union Hotel

Cline Nora, dressmaker, Sage Block

(Cline, see also Kline)

Clinton Betsey A., 85 Eddy

CLINTON CHARLES M., model maker and experimenter, cor Green and Cayuga, h 22 S Geneva

Clinton DeWitt, finisher, h 140 N Aurora

Clinton Edward, wood finisher, h 139 N Aurora

BOOK  **COMMERCIAL PRINTING AT NORTON'S.**

CS 5150 SOFTWARE ENGINEERING TO THE RESCUE!

**DEVELOP A DATA ENTRY MODULE FOR:
TRANSCRIBING CENSUS AND DIRECTORY DATA
ENTERING BUILDING INFORMATION**

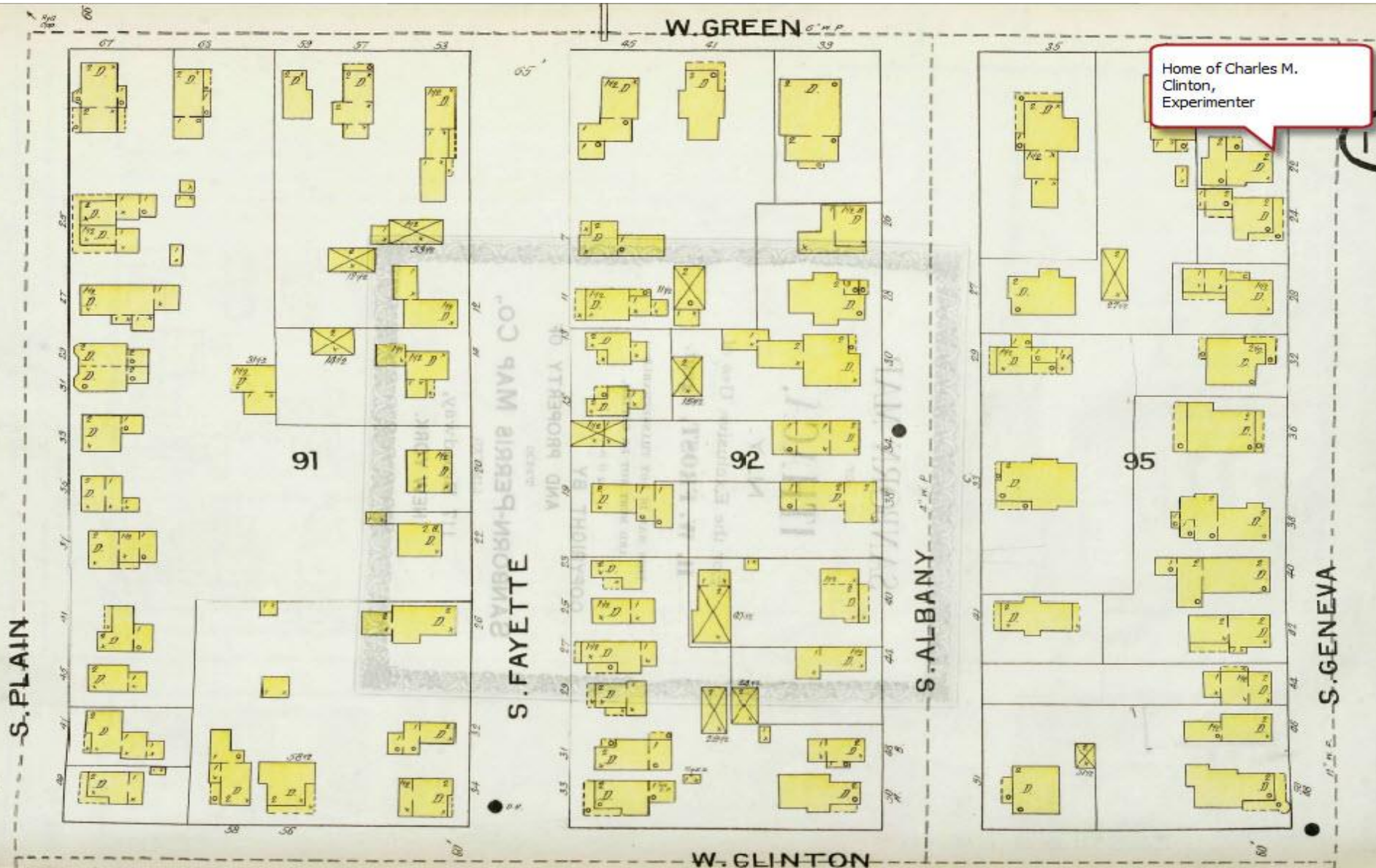
**DEVELOP AN ADMINISTRATIVE MODULE FOR:
VOLUNTEER CHECK IN / CHECK OUT OF IMAGES
VOLUNTEER SUBMISSION AND EDITORIAL CONTROL**

**DEVELOP A DATABASE STRUCTURE TO:
ALLOW QUERIES FROM THE MAP
ALLOW QUERIES FROM A SEARCH INTERFACE**

THIS WILL ALLOW US TO CREATE A WEB OF DATA

- **THAT WILL ADD VALUE TO THE MAP**
- **ADD VALUE TO THE DATA**
- **ALLOW A NEW APPROACH TO LOCAL HISTORY**
- **ENGAGE THE PUBLIC IN DEVELOPING A POWERFUL HISTORICAL RESOURCE**

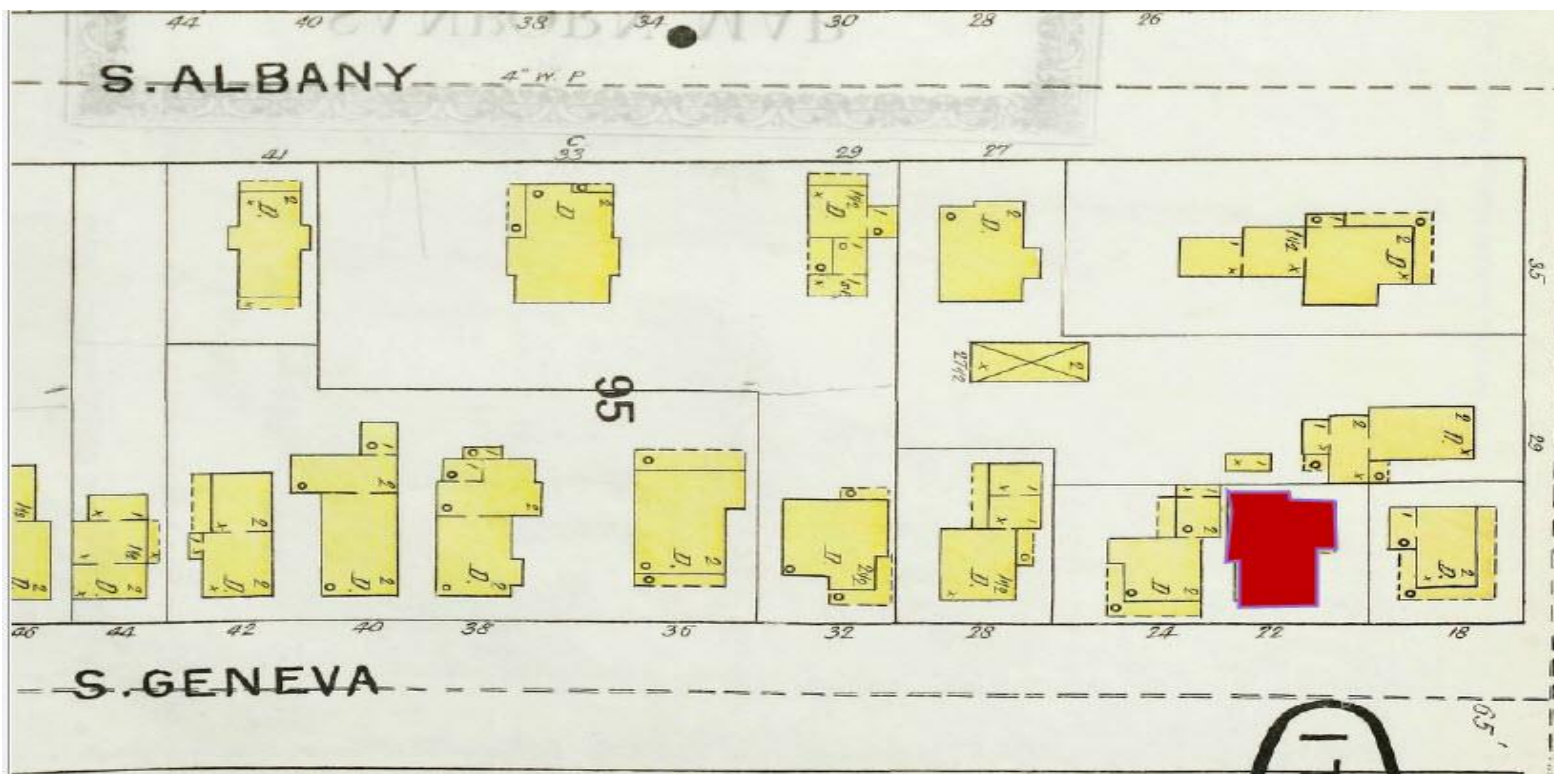
CLICK ON THE BUILDING TO LINK TO DATA



CENSUS RECORDS TRANSCRIBED AND REFORMATTED

	A	B	C	D	E	F	G	H	I	J	K	L	M	N	O	P
1	Census	Location	Building ID	Last Name	First Name	Personal ID	Race	Sex	DoB Month	DoB Year	Age at Census	PoB	Father's PoB	Mother's PoB	Citizenship	Occupation
2	1900	206 S Geneva	2314	Clinton	Charles M	34	w	m	Jan	1834	66	NY	CT	CT	US	Model Maker
3	1900	206 S Geneva	2314	Clinton	Adelaide	35	w	f	Mar	1844	56	NY	NY	NY	US	
4	1900	208 S Geneva	2315	Reed	Robert	36	w	m	Sep	1840	60	NY	Ireland	Ireland	US	Landlord

CLICK ON THE RECORD TO BRING UP THE MAP



LEAVING THE DEVELOPER TO DESIGN THE MAP INTERFACE

- **??!!??**
- **CURRENT THINKING: OVERLAY THE SANBORN
MAPS ON GOOGLE MAPS.**
- **MARKERS/INFOWINDOWS TO QUERY THE
DATABASES.**

PUTTING IT ALL TOGETHER: COLLABORATION



- **THE HISTORY CENTER**
- **TOMPKINS COUNTY PUBLIC LIBRARY**
- **LOCAL MUNICIPALITIES: CITY, TOWN AND COUNTY**
- **CORNELL UNIVERSITY LIBRARY**
- **THE LOCAL GIS COMMUNITY: SYNERGIS!**

WHERE TO GO FROM HERE



- **GRANTS**
 - **DIGITIZING AND SERVER COSTS**
 - **PROGRAMMING: CONNECTING THE DATA**
- **CROWD SOURCING**
 - **VOLUNTEER TRANSCRIBERS**
 - **PUBLIC INTERFACE WILL ALLOW INDIVIDUAL TO ADD NOTES**
- **EDUCATION**
 - **HISTORY CLASSES COULD DO TRANSCRIPTION AS A PROJECT**
 - **ENVIRONMENTAL CLASSES**



THANK YOU!

BOB KIBBEE

**MAP AND GEOSPATIAL INFORMATION LIBRARIAN (RETIRED
BUT NOT RETIRING!)**

RK14@CORNELL.EDU